

MISCELLANEOUS INFORMATION

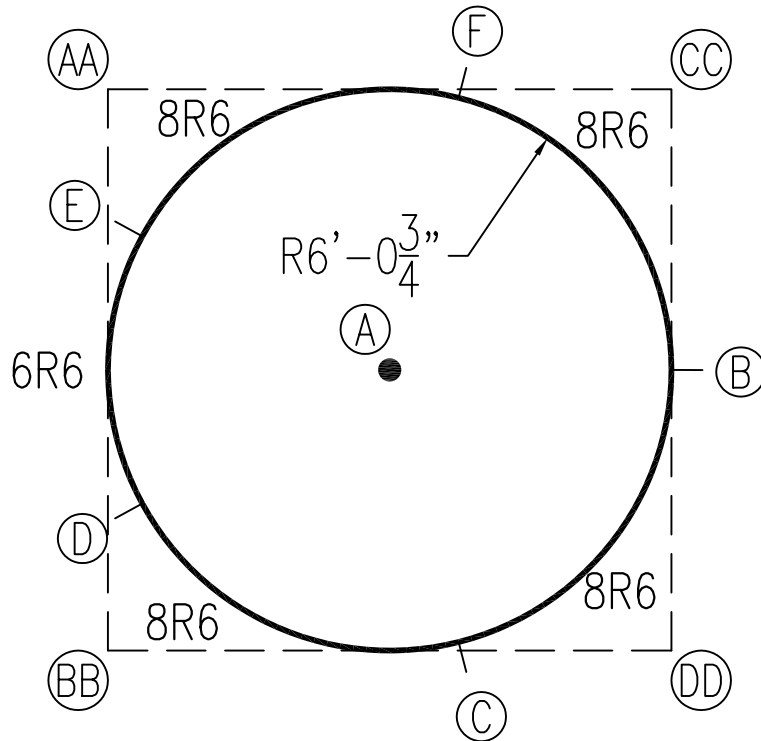
PERIMETER:-	38'-0"
SURFACE AREA:	115 SQ FT
VOLUME:	2504 IMP GALS 11391 L

PARTS LIST

CODE	QTY	DESCRIPTION
8R6	4	8'-0" Plain x 6'-0" Rad
6R6	1	6'-0" Plain x 6'-0" Rad
NB	50	Nuts & Bolts

INSTALLATION DATA

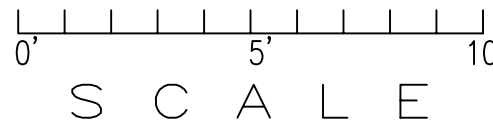
From Point "A" to:-		From Point "B" to:-	
B	6'-0 3/4"	B	
C	6'-0 1/4"	C	7'-5 1/8"
D	6'-0 1/2"	D	11'-8 7/8"
E	6'-0 3/4"	E	11'-8 7/8"
F	6'-0 3/4"	F	7'-5 1/8"



EXTERNAL INSTALLATION DATA

AA TO:	BB TO:	CC TO:	DD TO:
AA	12'-0 7/8"	AA	12'-1 1/2"
BB		BB	17'-1 3/8"
CC		CC	
A	8'-6 7/8"	A	8'-6 7/8"
B	13'-6 1/2"	B	6'-0 1/2"
C	14'-1"	C	12'-8 7/8"
D	8'-11 3/8"	D	14'-5 1/2"
E	3'-2 7/8"	E	11'-9 7/8"
F	7'-6 5/8"	F	4'-6 7/8"

\*ALL DIMENSIONS ARE FINISHED



NOTICE

SWIMMING POOLS AND ACCESSORIES (INCLUDING DIVING BOARDS) ARE DANGEROUS WHEN IMPROPERLY USED OR INSTALLED. IT IS THE RESPONSIBILITY OF MUNICIPAL OFFICIALS, BUILDERS AND POOL OWNERS TO ADHERE TO ALL SAFETY RECOMMENDATIONS AND STANDARDS ISSUED BY THE POOL & HOT TUB COUNCIL, LOCAL AUTHORITIES AND EQUIPMENT MANUFACTURERS. PLEASE REFER TO DIVING BOARD MANUFACTURERS FOR CORRECT POSITIONING AND INSTALLATION OF DIVING EQUIPMENT.