

MISCELLANEOUS INFORMATION

PERIMETER:	90'10"
SURFACE AREA:	516 SQ FT
VOLUME:	14336 IMP GALS 65229 LITER

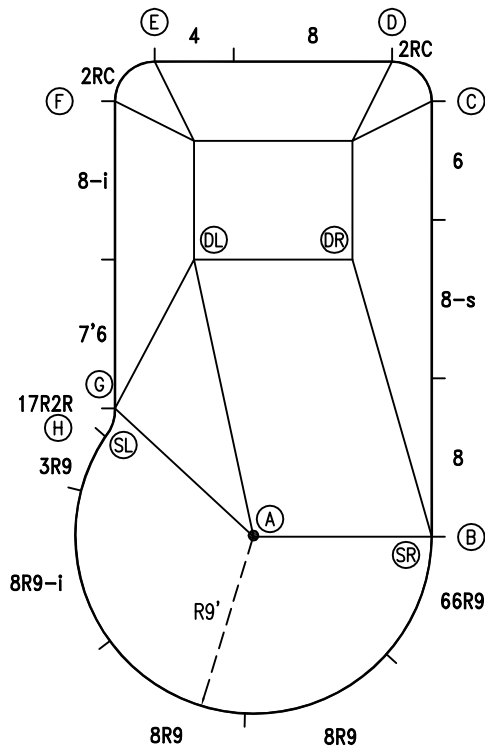
CONCRETE DECK INFO

WIDTH	AREA	NET INCREASES FOR:			
		STEPS	DIVING	SLIDE	ROLLER
2'	195	13	27	24	10
2'6"	301	17	31	20	10
3'	0	20	36	16	10

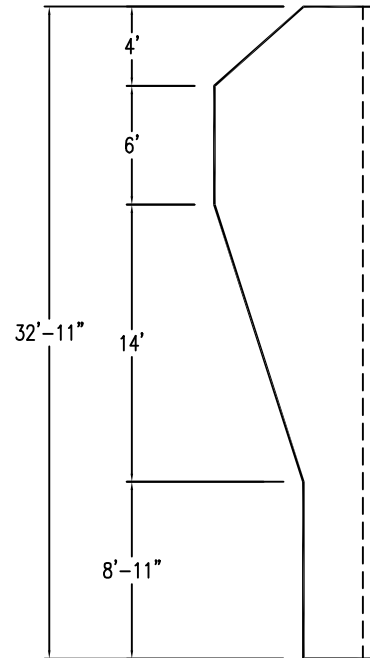
All Figures Represent "Sq Ft"

PARTS LIST

CODE	QTY	DESCRIPTION
3R9	1	3' Plain x 9' Radius
8R9-i	1	8' Return x 9' Radius
8R9	2	8' Plain x 9' Radius
66R9	1	6'6" Plain x 9' Radius
8	2	8' Plain
8-s	1	8' Skimmer
6	1	6' Plain
2RC	2	3'2" Plain x 2' Rad Cnr
4	1	4' Plain
8-i	1	8' Return
7'6	1	7'6" Plain
17R2R	1	1'7" Plain x 2' Reverse Radius
AF	15	A-Frame
S	30	Stakes
NB	90	Nuts & Bolts



6" WATER LINE



INSTALLATION DATA

From Point "A" to:-		From Point "B" to:-	
B	9'-0"	B	22'-0"
C	23'-8 1/2"	C	24'-0 3/4"
D	24'-11 1/4"	D	27'-9 1/4"
E	24'-5 1/2"	E	27'-2 1/4"
F	23'-0 1/4"	F	17'-3 1/4"
G	9'-6"	G	17'-2 3/4"
H	9'-0"	H	17'-3 1/4"
SL	9'-6"	SL	0'-0"
SR	14'-3"	DL	18'-5 1/4"
DL	14'-9 1/2"	DR	14'-6 3/4"

NOTICE

SWIMMING POOLS AND ACCESSORIES (INCLUDING DIVING BOARDS) ARE DANGEROUS WHEN IMPROPERLY USED OR INSTALLED. IT IS THE RESPONSIBILITY OF MUNICIPAL OFFICIALS, BUILDERS AND POOL OWNERS TO ADHERE TO ALL SAFETY RECOMMENDATIONS AND STANDARDS ISSUED BY THE POOL & HOT TUB COUNCIL, LOCAL AUTHORITIES AND EQUIPMENT MANUFACTURERS. PLEASE REFER TO DIVING BOARD MANUFACTURERS FOR CORRECT POSITIONING AND INSTALLATION OF DIVING EQUIPMENT.

*ALL DIMENSIONS ARE FINISHED

