

**MISCELLANEOUS INFORMATION**

PERIMETER:	73'7"
SURFACE AREA:	361 SQ FT
VOLUME:	8469 IMP GALS 38534 LITER

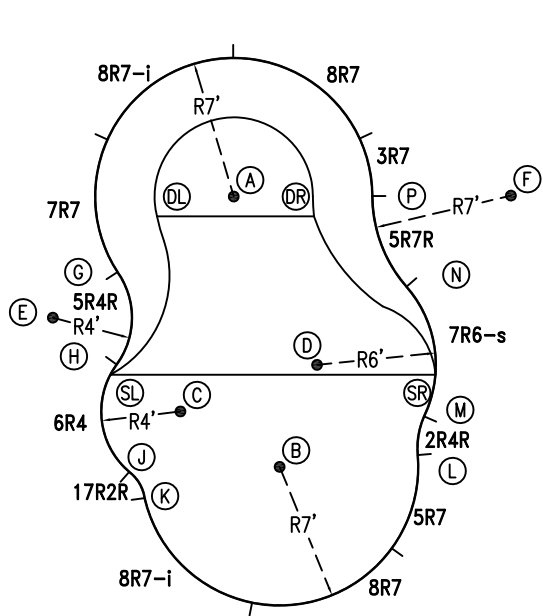
**CONCRETE DECK INFO**

WIDTH	AREA	NET INCREASES FOR:			
		STEPS	DIVING	SLIDE	ROLLER
2'	159	13	27	24	10
2'6"	203	17	31	20	10
3'	248	20	36	16	10

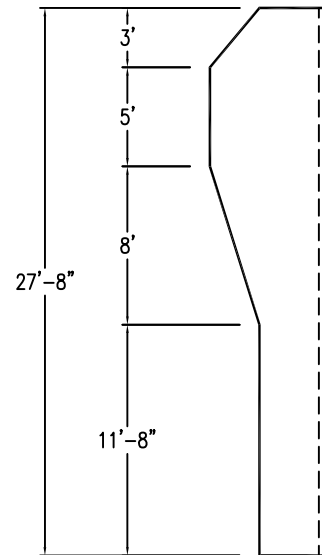
All Figures Represent "Sq Ft"

**PARTS LIST**

CODE	QTY	DESCRIPTION
3R7	1	3' Plain x 7' Radius
8R7	2	8' Plain x 7' Radius
8R7-i	2	8' Return x 7' Radius
7R7	1	7' Plain x 7' Radius
5R4R	1	5' Plain x 4' Reverse Radius
6R4	1	6' Plain x 4' Radius
17R2R	1	1'7" Plain x 2' Reverse Radius
5R7	1	5' Plain x 7' Radius
2R4R	1	2' Plain x 4' Reverse Radius
7R6-s	1	7' Skimmer x 6' Radius
5R7R	1	5' Plain x 7' Reverse Radius
AF	13	A-Frame
S	26	Stakes
NB	78	Nuts & Bolts



6" WATER LINE



**INSTALLATION DATA**

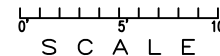
From Point "A" to:-		From Point "B" to:-	
B	13'-10"	B	5'-8 3/4"
C	11'-2 1/4"	C	5'-5 3/4"
D	9'-5 3/4"	D	5'-8 1/2"
E	11'-0"	E	13'-8 1/2"
F	14'-0"	F	18'-0"
G	7'-0"	G	12'-9 1/2"
H	10'-4"	H	9'-8 1/2"
J	14'-10 1/2"	J	7'-7 1/4"
K	15'-10 1/2"	K	7'-0"
L	16'-0 1/4"	L	7'-0"
M	14'-8 1/4"	M	7'-8 3/4"
N	9'-10"	N	11'-1 1/2"
P	7'-0"	P	14'-5 1/2"
SL	10'-11 1/4"	SL	9'-8 3/4"
SR	13'-7"	SR	9'-1 1/2"
DL	4'-0"	DL	14'-1"
DR	4'-2"	DR	12'-9 1/4"

**NOTICE**

SWIMMING POOLS AND ACCESSORIES (INCLUDING DIVING BOARDS) ARE DANGEROUS WHEN IMPROPERLY USED OR INSTALLED. IT IS THE RESPONSIBILITY OF MUNICIPAL OFFICIALS, BUILDERS AND POOL OWNERS TO ADHERE TO ALL SAFETY RECOMMENDATIONS AND STANDARDS ISSUED BY THE POOL & HOT TUB COUNCIL, LOCAL AUTHORITIES AND EQUIPMENT MANUFACTURERS. PLEASE REFER TO DIVING BOARD MANUFACTURERS FOR CORRECT POSITIONING AND INSTALLATION OF DIVING EQUIPMENT.

17'-2 1/2"

\*ALL DIMENSIONS ARE FINISHED



EXTERNAL INSTALLATION DATA

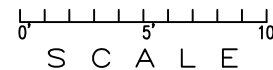
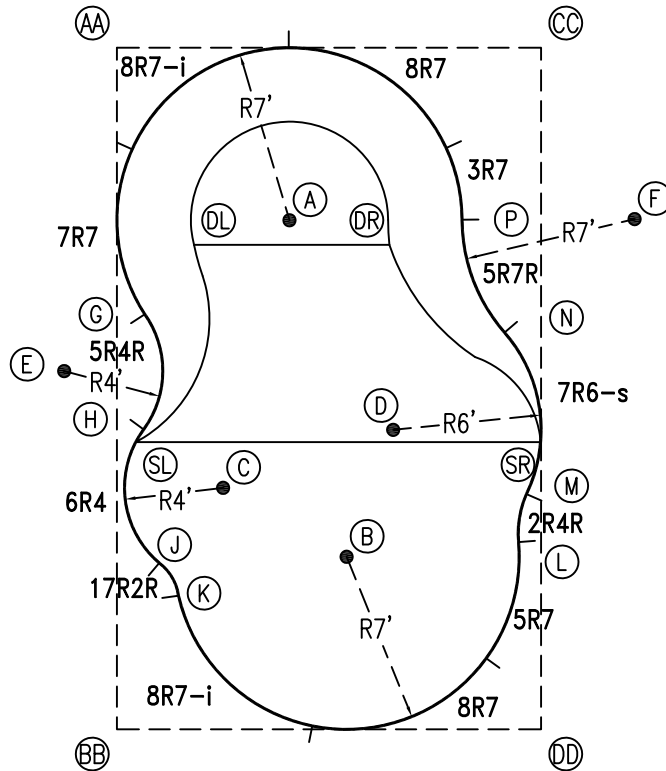
AA TO:	BB TO:	CC TO:	DD TO:
AA --	AA 27'-7 3/4"	AA 17'-2 1/2"	AA 32'-6 3/4"
BB --	BB --	BB 32'-6 3/4"	BB 17'-2 1/2"
CC --	CC --	CC --	CC 27'-7 3/4"
A 9'-10 3/4"	A 21'-9 1/2"	A 12'-4 1/2"	A 23'-0 1/2"
B 22'-7 3/4"	B 11'-7 3/4"	B 22'-1 1/4"	B 10'-6 1/2"
C 18'-4 1/4"	C 10'-8 1/4"	C 22'-0 1/4"	C 16'-2 1/4"
D 19'-1 1/2"	D 16'-6 1/4"	D 16'-7 1/2"	D 13'-6 1/2"
E 13'-3 1/2"	E 14'-8 1/4"	E 23'-4 1/2"	E 24'-2 1/4"
F 22'-1 1/2"	F 29'-5 3/4"	F 7'-11"	F 21'-0 1/2"
G 10'-10 1/2"	G 16'-10 1/2"	G 19'-4 1/2"	G 23'-3 1/4"
H 15'-6 1/4"	H 12'-2 1/2"	H 22'-4 1/4"	H 20'-2 1/4"
J 20'-11 1/2"	J 6'-11 1/2"	J 26'-0 1/4"	J 16'-10 3/4"
K 22'-4 1/2"	K 5'-11 1/2"	K 26'-7 3/4"	K 15'-8"
L 25'-10"	L 17'-11 3/4"	L 20'-0 3/4"	L 7'-7 3/4"
M 24'-6 3/4"	M 19'-1 3/4"	M 18'-1 1/4"	M 9'-6 3/4"
N 19'-6 1/4"	N 22'-6"	N 11'-7 3/4"	N 16'-1 3/4"
P 15'-7 3/4"	P 24'-11 1/2"	P 7'-8"	P 20'-11"
SL 16'-0 1/4"	SL 11'-8"	SL 22'-11 1/4"	SL 20'-1 3/4"
SR 23'-5 3/4"	SR 20'-9"	SR 16'-0"	SR 11'-7 3/4"
DL 8'-7"	DL 19'-10 3/4"	DL 16'-2 1/4"	DL 24'-2"
DR 13'-7 3/4"	DR 22'-6 1/2"	DR 10'-1"	DR 20'-7"

DIAGONALS

From Point "G" to:-	From Point "H" to:-
H 4'-8 1/8"	H
J 10'-1 1/4"	J 5'-5 3/8"
K 11'-6"	K 6'-10 3/4"
L 17'-9 1/8"	L 15'-10 5/8"
M 17'-1 3/8"	M 15'-8 7/8"
N 14'-7 3/8"	N 15'-1 7/8"
P 13'-5 1/8"	P 15'-5 5/8"

NOTICE

SWIMMING POOLS AND ACCESSORIES (INCLUDING DIVING BOARDS) ARE DANGEROUS WHEN IMPROPERLY USED OR INSTALLED. IT IS THE RESPONSIBILITY OF MUNICIPAL OFFICIALS, BUILDERS AND POOL OWNERS TO ADHERE TO ALL SAFETY RECOMMENDATIONS AND STANDARDS ISSUED BY THE POOL & HOT TUB COUNCIL, LOCAL AUTHORITIES AND EQUIPMENT MANUFACTURERS. PLEASE REFER TO DIVING BOARD MANUFACTURERS FOR CORRECT POSITIONING AND INSTALLATION OF DIVING EQUIPMENT.



HIGHBURY POOLS LTD

CARIBBEAN - LEFT 14 x 17 x 28

DRAWING REFERENCE #  
5A-17-28-1

DRAWN BY: JK  
REV. 15 AUG 13  
SHEET 2 OF 2