

MISCELLANEOUS INFORMATION

PERIMETER:	87'1"
SURFACE AREA:	505 SQ FT
VOLUME:	14795 IMP GALS 67317 LITER

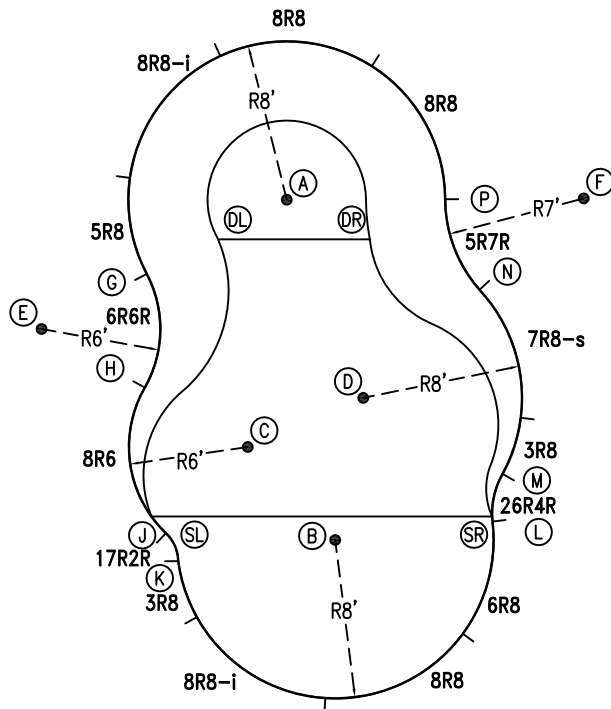
CONCRETE DECK INFO

WIDTH	AREA	NET INCREASES FOR:			
		STEPS	DIVING	SLIDE	ROLLER
2'	187	13	27	24	10
2'6"	237	17	31	20	10
3'	289	20	36	16	10

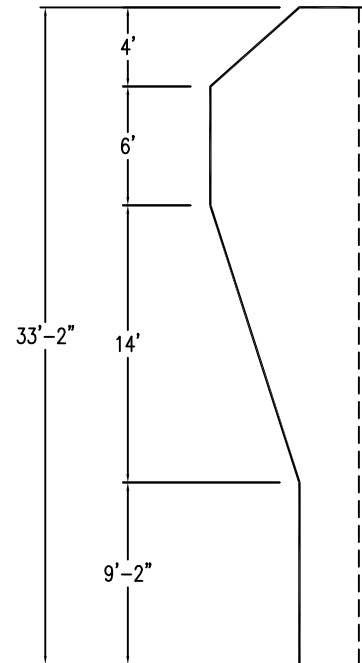
All Figures Represent "Sq Ft"

PARTS LIST

CODE	QTY	DESCRIPTION
8R8	3	8' Plain x 8' Radius
8R8-i	2	8' Return x 8' Radius
5R8	1	5' Plain x 8' Radius
6R6R	1	6' Plain x 6' Reverse Radius
8R6	1	8' Plain x 6' Radius
17R2R	1	1'7" Plain x 2' Reverse Radius
3R8	2	3' Plain x 8' Radius
6R8	1	6' Plain x 8' Radius
26R4R	1	2'6" Plain x 4' Reverse Radius
7R8-s	1	7' Skimmer x 8' Radius
5R7R	1	5' Plain x 7' Reverse Radius
AF	15	A-Frame
S	30	Stakes
NB	90	Nuts & Bolts



6" WATER LINE

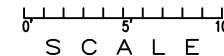


INSTALLATION DATA

From Point "A" to:-		From Point "B" to:-	
B	17'-4 1/4"	B	6'-5 1/4"
C	12'-7 3/4"	C	7'-3 3/4"
D	10'-8 3/4"	D	7'-3 3/4"
E	14'-0"	E	18'-3"
F	15'-0"	F	21'-4"
G	8'-0"	G	16'-5 1/2"
H	11'-10 3/4"	H	12'-3 3/4"
J	17'-10 3/4"	J	8'-6 3/4"
K	19'-0 1/2"	K	8'-0"
L	19'-3 1/2"	L	8'-0"
M	17'-7 1/2"	M	9'-1"
N	10'-8 3/4"	N	14'-7"
P	8'-0"	P	18'-1"
SL	17'-4 3/4"	SL	9'-4 1/4"
SR	19'-0 3/4"	SR	8'-0"
DL	4'-0"	DL	16'-3 1/2"
DR	4'-7 3/4"	DR	15'-3 1/4"

19'-10 1/2"

*ALL DIMENSIONS ARE FINISHED



NOTICE

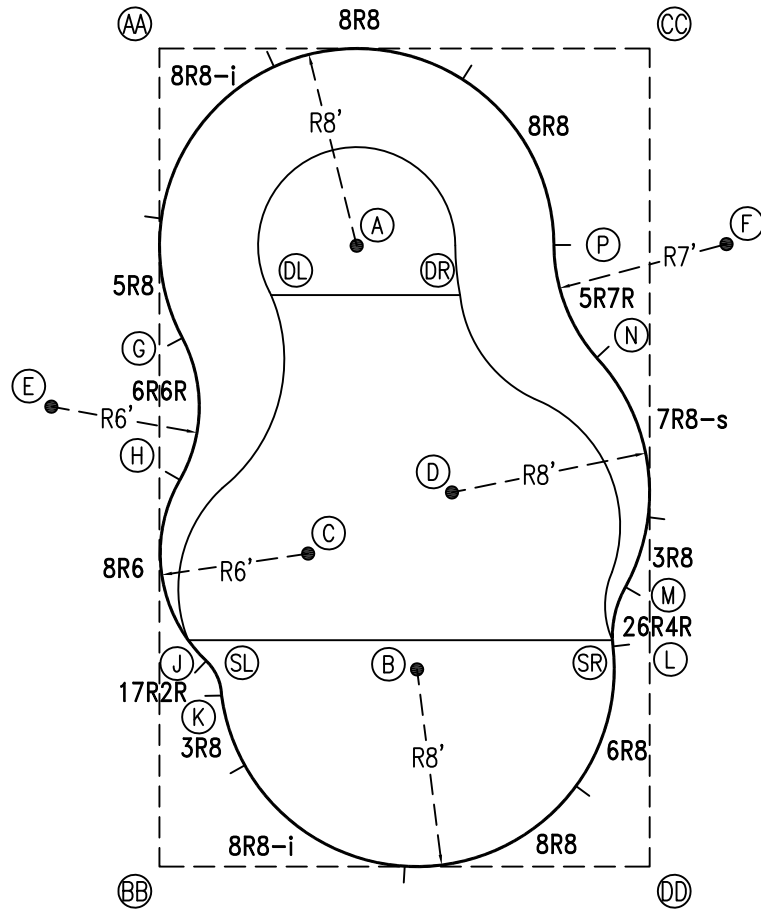
SWIMMING POOLS AND ACCESSORIES (INCLUDING DIVING BOARDS) ARE DANGEROUS WHEN IMPROPERLY USED OR INSTALLED. IT IS THE RESPONSIBILITY OF MUNICIPAL OFFICIALS, BUILDERS AND POOL OWNERS TO ADHERE TO ALL SAFETY RECOMMENDATIONS AND STANDARDS ISSUED BY THE POOL & HOT TUB COUNCIL, LOCAL AUTHORITIES AND EQUIPMENT MANUFACTURERS. PLEASE REFER TO DIVING BOARD MANUFACTURERS FOR CORRECT POSITIONING AND INSTALLATION OF DIVING EQUIPMENT.

HIGHBURY POOLS LTD

CARIBBEAN - LEFT 16 x 20 x 33

DRAWING REFERENCE #
5A-20-33-1

DRAWN BY: JK
REV. 16 AUG 13
SHEET 1 OF 2



EXTERNAL INSTALLATION DATA

AA TO:	BB TO:	CC TO:	DD TO:
AA --	AA 33'-2 1/4"	AA 19'-10 1/2"	AA 38'-8 1/4"
BB --	BB --	BB 38'-8 1/4"	BB 19'-10 1/2"
CC --	CC --	CC --	CC 33'-2 1/4"
A 11'-3 3/4"	A 26'-5"	A 14'-3 3/4"	A 27'-10"
B 27'-3 1/4"	B 13'-1 3/4"	B 26'-10 3/4"	B 12'-4 1/4"
C 21'-4 1/4"	C 14'-0 1/2"	C 24'-8 3/4"	C 18'-9 1/2"
D 21'-6 3/4"	D 19'-3"	D 19'-8 1/2"	D 17'-1 3/4"
E 15'-2"	E 19'-1 3/4"	E 28'-3 1/4"	E 30'-7 1/4"
F 24'-3 3/4"	F 34'-1 3/4"	F 8'-6 1/4"	F 25'-5 1/4"
G 11'-9 1/4"	G 21'-5 1/2"	G 22'-3 1/2"	G 28'-7 1/4"
H 17'-6"	H 15'-8 1/2"	H 25'-10 1/4"	H 24'-8"
J 24'-10 3/4"	J 8'-6 3/4"	J 30'-7 3/4"	J 19'-9 3/4"
K 26'-4 1/2"	K 7'-4 1/2"	K 31'-5 1/2"	K 18'-8 1/4"
L 30'-5 1/4"	L 20'-5 1/4"	L 24'-3 1/2"	L 9'-0 1/2"
M 28'-10 1/2"	M 22'-0 1/2"	M 21'-10 1/4"	M 11'-4 1/2"
N 21'-8 3/4"	N 27'-2 1/2"	N 12'-8 3/4"	N 20'-8 3/4"
P 17'-10 1/2"	P 29'-10 1/4"	P 8'-10 1/4"	P 25'-6"
SL 24'-0 1/4"	SL 9'-3"	SL 30'-5 1/4"	SL 20'-10 1/4"
SR 30'-2 3/4"	SR 20'-6 1/2"	SR 24'-0 1/2"	SR 9'-3 3/4"
DL 10'-11 3/4"	DL 23'-7 1/2"	DL 18'-3 3/4"	DL 27'-9 1/2"
DR 15'-9 1/4"	DR 26'-2 1/4"	DR 12'-7 1/4"	DR 24'-5"

DIAGONALS

From Point "G" to:-		From Point "H" to:-	
H	5'-9"	H	
J	13'-1 5/8"	J	7'-5"
K	14'-7 1/8"	K	8'-10 7/8"
L	21'-5 3/4"	L	18'-9 7/8"
M	20'-7 3/8"	M	18'-7 1/8"
N	16'-9 7/8"	N	17'-7 3/8"
P	15'-6 3/8"	P	17'-10 7/8"

NOTICE

SWIMMING POOLS AND ACCESSORIES (INCLUDING DIVING BOARDS) ARE DANGEROUS WHEN IMPROPERLY USED OR INSTALLED. IT IS THE RESPONSIBILITY OF MUNICIPAL OFFICIALS, BUILDERS AND POOL OWNERS TO ADHERE TO ALL SAFETY RECOMMENDATIONS AND STANDARDS ISSUED BY THE POOL & HOT TUB COUNCIL, LOCAL AUTHORITIES AND EQUIPMENT MANUFACTURERS. PLEASE REFER TO DIVING BOARD MANUFACTURERS FOR CORRECT POSITIONING AND INSTALLATION OF DIVING EQUIPMENT.

