

MISCELLANEOUS INFORMATION

PERIMETER:	99'7"
SURFACE AREA:	556 SQ FT
VOLUME:	16425 IMP GALS 74734 LITER

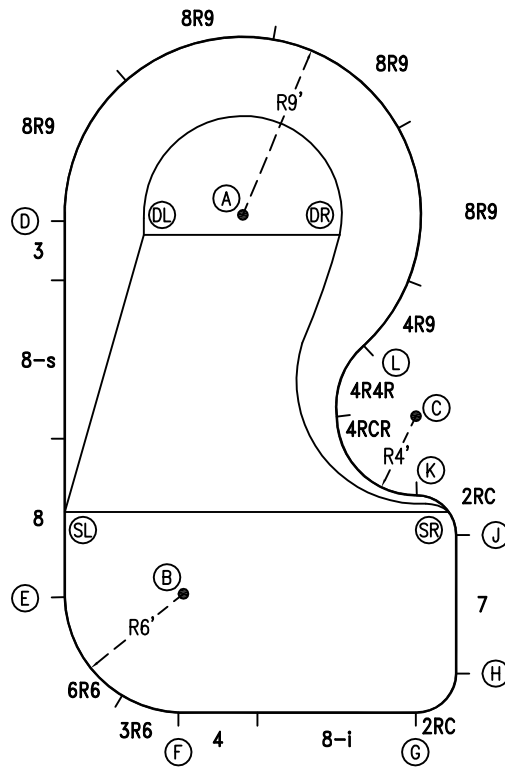
CONCRETE DECK INFO

WIDTH	AREA	NET INCREASES FOR:			
		STEPS	DIVING	SLIDE	ROLLER
2'	212	13	27	24	10
2'6"	269	17	31	20	10
3'	327	20	36	16	10

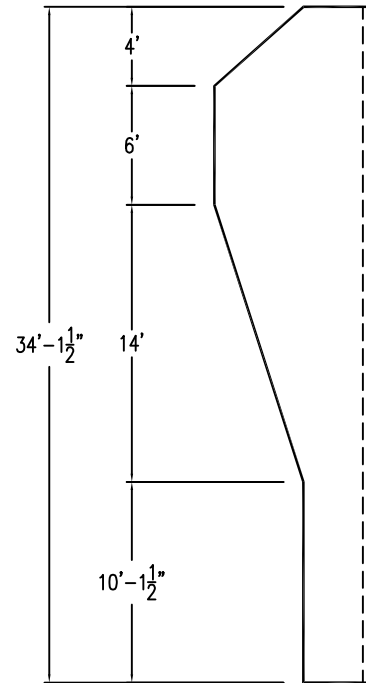
All Figures Represent "Sq Ft"

PARTS LIST

CODE	QTY	DESCRIPTION
3R6	1	3' Plain x 6' Radius
6R6	1	6' Plain x 6' Radius
8	1	8' Plain
8-s	1	8' Skimmer
3	1	3' Plain
8R9	4	8' Plain x 9' Radius
4R9	1	4' Plain x 9' Radius
4R4R	1	4' Plain x 4' Reverse Radius
4RCR	1	6'3" Plain x 4' Rev Rad Cnr
2RC	2	3'2" Plain x 2' Rad Cnr
7	1	7' Plain
8-i	1	8' Return
4	1	4' Plain
AF	17	A-Frame
S	34	Stakes
NB	102	Nuts & Bolts



6" WATER LINE



INSTALLATION DATA

From Point "A" to:-		From Point "B" to:-	
B	19'-4 1/2"	B	14'-9 1/4"
C	13'-4 3/4"	C	14'-9 1/4"
D	9'-0"	D	19'-9 1/4"
E	21'-3 1/2"	E	6'-0"
F	25'-4"	F	6'-0"
G	26'-7 1/4"	G	13'-2 1/4"
H	25'-6 1/2"	H	14'-4 1/4"
J	19'-5"	J	14'-1"
K	16'-7 3/4"	K	12'-9 1/2"
L	9'-0"	L	15'-5 3/4"
SL	17'-5 3/4"	SL	7'-3 1/2"
SR	18'-3"	SR	14'-0 1/4"
DL	5'-1"	DL	18'-3"
DR	5'-0"	DR	19'-9 1/4"

19'-9 1/2"

*ALL DIMENSIONS ARE FINISHED

0 5 10'
SCALE

NOTICE

SWIMMING POOLS AND ACCESSORIES (INCLUDING DIVING BOARDS) ARE DANGEROUS WHEN IMPROPERLY USED OR INSTALLED. IT IS THE RESPONSIBILITY OF MUNICIPAL OFFICIALS, BUILDERS AND POOL OWNERS TO ADHERE TO ALL SAFETY RECOMMENDATIONS AND STANDARDS ISSUED BY THE POOL & HOT TUB COUNCIL, LOCAL AUTHORITIES AND EQUIPMENT MANUFACTURERS. PLEASE REFER TO DIVING BOARD MANUFACTURERS FOR CORRECT POSITIONING AND INSTALLATION OF DIVING EQUIPMENT.

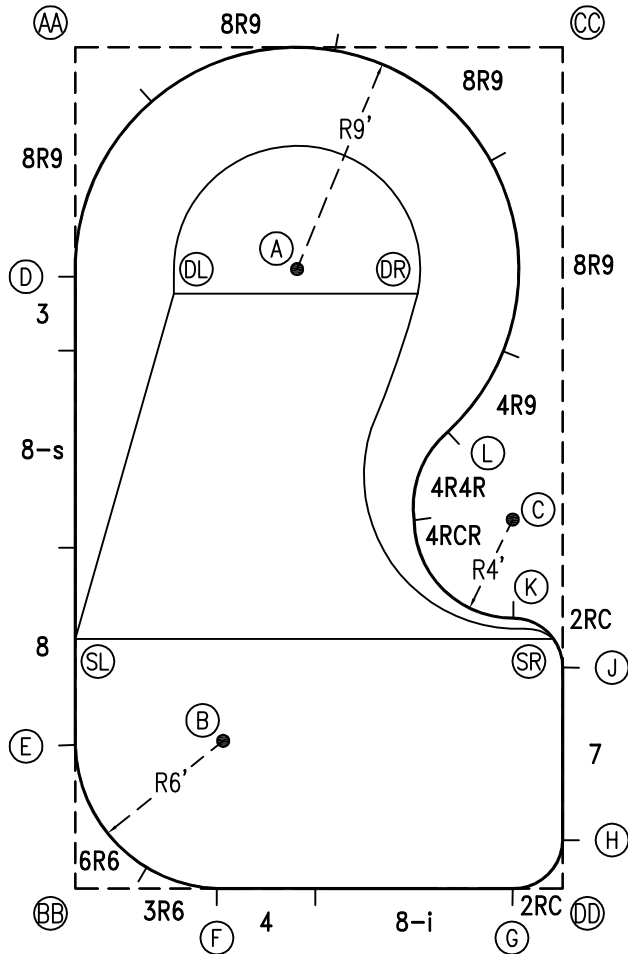
HIGHBURY POOLS LTD

GRAND BEND - RIGHT 18 x 20 x 34

DRAWING REFERENCE #
10A-18-34-2

DRAWN BY: JK
REV. 16 AUG 13
SHEET 1 OF 2

PERIMETER: 99'7"



EXTERNAL INSTALLATION DATA

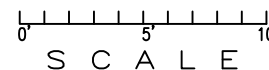
AA TO:	BB TO:	CC TO:	DD TO:
AA ---	AA 34'-1 1/2"	AA 19'-9 1/4"	AA 39'-5 1/4"
BB ---	BB ---	BB 39'-5 1/4"	BB 19'-9 1/4"
CC ---	CC ---	CC ---	CC 34'-1 1/2"
A 12'-8 3/4"	A 26'-8 1/4"	A 14'-0 1/2"	A 27'-4"
B 28'-9 1/4"	B 8'-5 3/4"	B 31'-3 3/4"	B 15'-0 1/4"
C 26'-1 1/4"	C 23'-2 1/2"	C 19'-3 1/4"	C 15'-1 1/4"
D 9'-3 3/4"	D 24'-9 3/4"	D 21'-10 1/4"	D 31'-8 3/4"
E 28'-3 3/4"	E 5'-9 3/4"	E 34'-6 1/4"	E 20'-7 1/4"
F 34'-7 1/4"	F 5'-8 3/4"	F 36'-10 3/4"	F 14'-0 1/4"
G 38'-5 1/2"	G 17'-8 3/4"	G 34'-2 1/4"	G 2'-0 1/4"
H 37'-9"	H 19'-10 1/2"	H 32'-1 3/4"	H 1'-11 1/2"
J 32'-0"	J 21'-8 1/2"	J 25'-1 3/4"	J 8'-11 1/2"
K 29'-2 1/4"	K 20'-10 3/4"	K 23'-2 3/4"	K 11'-1 3/4"
L 21'-8 3/4"	L 23'-10 3/4"	L 16'-3 1/2"	L 19'-1 1/4"
SL 24'-0"	SL 10'-1 1/2"	SL 31'-1"	SL 22'-2 1/2"
SR 30'-10 1/4"	SR 21'-10 3/4"	SR 24'-0"	SR 10'-1 3/4"
DL 10'-9 1/4"	DL 24'-5 1/2"	DL 18'-8"	DL 28'-9 3/4"
DR 17'-1 1/2"	DR 27'-10 1/4"	DR 11'-7 1/4"	DR 24'-10"

DIAGONALS

From Point "D" to:-	From Point "E" to:-
E 19'-0"	E
F 25'-5 3/4"	F 8'-2 1/8"
G 30'-6 1/8"	G 18'-8 1/8"
H 30'-2 5/8"	H 20'-1 3/4"
J 25'-4 1/8"	J 20'-0 1/4"
K 22'-6 3/8"	K 18'-6 1/8"
L 16'-4 3/8"	L 19'-8 7/8"

NOTICE

SWIMMING POOLS AND ACCESSORIES (INCLUDING DIVING BOARDS) ARE DANGEROUS WHEN IMPROPERLY USED OR INSTALLED. IT IS THE RESPONSIBILITY OF MUNICIPAL OFFICIALS, BUILDERS AND POOL OWNERS TO ADHERE TO ALL SAFETY RECOMMENDATIONS AND STANDARDS ISSUED BY THE POOL & HOT TUB COUNCIL, LOCAL AUTHORITIES AND EQUIPMENT MANUFACTURERS. PLEASE REFER TO DIVING BOARD MANUFACTURERS FOR CORRECT POSITIONING AND INSTALLATION OF DIVING EQUIPMENT.



HIGHBURY POOLS LTD

GRAND BEND - RIGHT 18 x 20 x 34

DRAWING REFERENCE #
10A-18-34-2

DRAWN BY: JK
REV. 16 AUG 13
SHEET 2 OF 2