

MISCELLANEOUS INFORMATION

PERIMETER:	54'
SURFACE AREA:	211 SQ FT
VOLUME:	5235 IMP GALS 23819 LITER

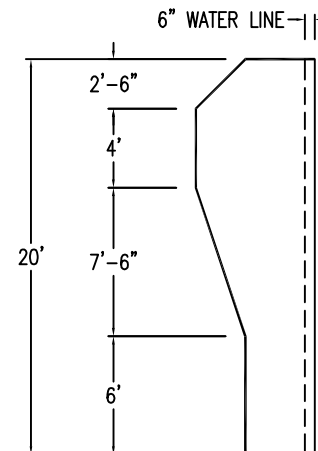
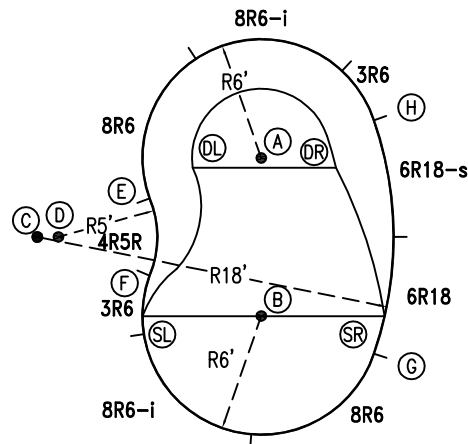
CONCRETE DECK INFO

WIDTH	AREA	NET INCREASES FOR:			
		STEPS	DIVING	SLIDE	ROLLER
2'	120	13	27	24	10
2'6"	154	17	31	20	10
3'	190	20	36	16	10

All Figures Represent "Sq Ft"

PARTS LIST

CODE	QTY	DESCRIPTION
3R6	2	3' Plain x 6' Radius
8R6-i	2	8' Return x 6' Radius
8R6	2	8' Plain x 6' Radius
2R5R	1	2' Plain x 5' Reverse Radius
2R51R	1	2' Plain x 5'1" Reverse Radius
6R18	1	6' Plain x 18' Radius
6R18-s	1	6' Skimmer x 18' Radius
AF	10	A-Frame
S	20	Stakes
NB	60	Nuts & Bolts



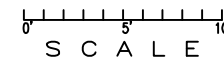
INSTALLATION DATA

From Point "A" to:-		From Point "B" to:-	
B	7'-11 3/4"	B	12'-0"
C	12'-0"	C	12'-0"
D	11'-0"	D	11'-0"
E	6'-0"	E	8'-2 1/4"
F	8'-2 1/4"	F	6'-0"
G	11'-4 3/4"	G	6'-0"
H	6'-0"	H	11'-4 3/4"
SL	10'-0"	SL	6'-0"
SR	10'-1 1/2"	SR	6'-2 3/4"
DL	3'-5 3/4"	DL	8'-2 3/4"
DR	3'-9 3/4"	DR	8'-4 1/2"

NOTICE

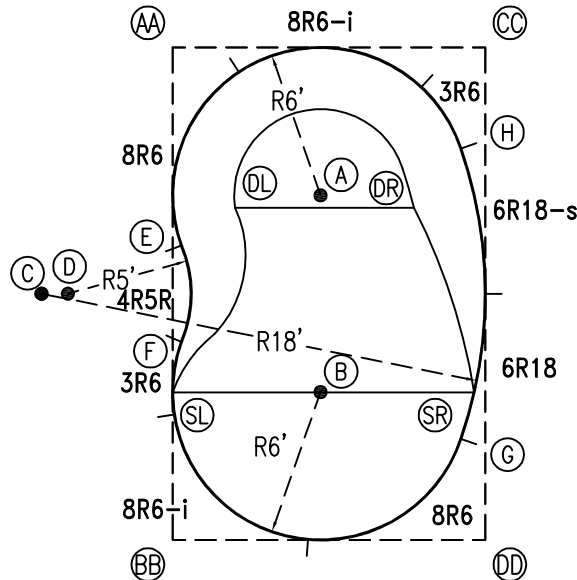
SWIMMING POOLS AND ACCESSORIES (INCLUDING DIVING BOARDS) ARE DANGEROUS WHEN IMPROPERLY USED OR INSTALLED. IT IS THE RESPONSIBILITY OF MUNICIPAL OFFICIALS, BUILDERS AND POOL OWNERS TO ADHERE TO ALL SAFETY RECOMMENDATIONS AND STANDARDS ISSUED BY THE POOL & HOT TUB COUNCIL, LOCAL AUTHORITIES AND EQUIPMENT MANUFACTURERS. PLEASE REFER TO DIVING BOARD MANUFACTURERS FOR CORRECT POSITIONING AND INSTALLATION OF DIVING EQUIPMENT.

*ALL DIMENSIONS ARE FINISHED



EXTERNAL INSTALLATION DATA

AA TO:	BB TO:	CC TO:	DD TO:
AA ---	AA 19'-11 3/4"	AA 12'-8 1/4"	AA 23'-7 3/4"
BB ---	BB ---	BB 23'-7 3/4"	BB 12'-8 1/4"
CC ---	CC ---	CC ---	CC 19'-11 3/4"
A 8'-5 3/4"	A 15'-2 1/2"	A 8'-11 3/4"	A 15'-5 3/4"
B 15'-2 1/2"	B 8'-5 3/4"	B 15'-5 3/4"	B 8'-11 3/4"
C 11'-3 3/4"	C 11'-3 3/4"	C 20'-7"	C 20'-7"
D 10'-10 1/4"	D 10'-10 1/4"	D 19'-7 3/4"	D 19'-7 3/4"
E 8'-0 1/2"	E 11'-11 1/4"	E 14'-8 1/2"	E 17'-1 3/4"
F 11'-11 1/4"	F 8'-0 1/2"	F 17'-1 3/4"	F 14'-8 1/2"
G 19'-8 1/2"	G 12'-4 1/2"	G 15'-10 3/4"	G 4'-2 1/2"
H 12'-4 1/2"	H 19'-8 1/2"	H 4'-2 1/2"	H 15'-10 3/4"
SL 14'-0"	SL 5'-11 3/4"	SL 18'-10 1/2"	SL 14'-0 1/4"
SR 18'-7"	SR 13'-7 1/4"	SR 14'-0"	SR 6'-0"
DL 6'-11 3/4"	DL 13'-8 1/2"	DL 12'-0 1/2"	DL 16'-10 1/2"
DR 11'-8 3/4"	DR 16'-7 3/4"	DR 7'-1 1/4"	DR 13'-9 1/2"



DIAGONALS

From Point "E" to:-	From Point "F" to:-
F 3'-10 3/4"	F
G 13'-9 3/8"	G 12'-0"
H 12'-0"	H 13'-9 3/8"

NOTICE

SWIMMING POOLS AND ACCESSORIES (INCLUDING DIVING BOARDS) ARE DANGEROUS WHEN IMPROPERLY USED OR INSTALLED. IT IS THE RESPONSIBILITY OF MUNICIPAL OFFICIALS, BUILDERS AND POOL OWNERS TO ADHERE TO ALL SAFETY RECOMMENDATIONS AND STANDARDS ISSUED BY THE POOL & HOT TUB COUNCIL, LOCAL AUTHORITIES AND EQUIPMENT MANUFACTURERS. PLEASE REFER TO DIVING BOARD MANUFACTURERS FOR CORRECT POSITIONING AND INSTALLATION OF DIVING EQUIPMENT.

