

MISCELLANEOUS INFORMATION

PERIMETER:-	83'-0"
SURFACE AREA:	388 SQ FT
VOLUME: 8,944 IMP GALS	40,696 L

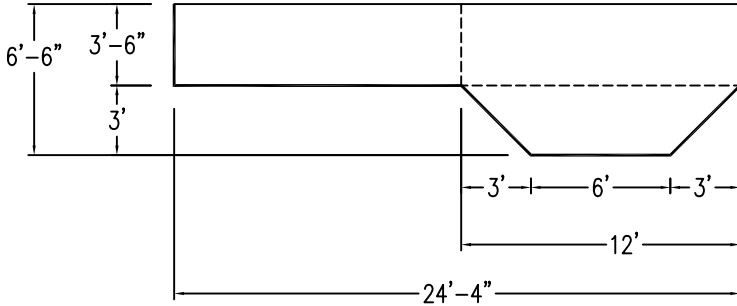
PARTS LIST

CODE	QTY	DESCRIPTION
6R6-s	1	6' Skimmer x 6' Radius
8R6-i	1	8' Inlet x 6' Radius
6R6-i	1	6' Inlet x 6' Radius
8R6	5	8' Plain x 6' Radius
8R6R	1	8' Plain x 6' Rev Radius
66R6R	2	6'-6" Plain x 6' Rev Radius
2R6R	1	2' Plain x 6' Rev Radius
AF	12	A-Frame
S	24	Stake
NB	72	Nuts & Bolts

CONCRETE DECK INFO

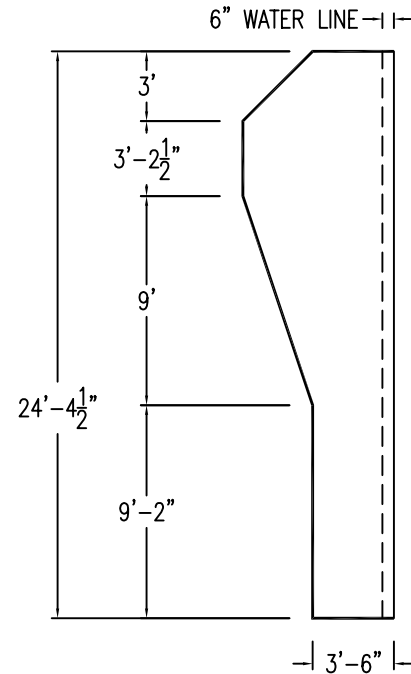
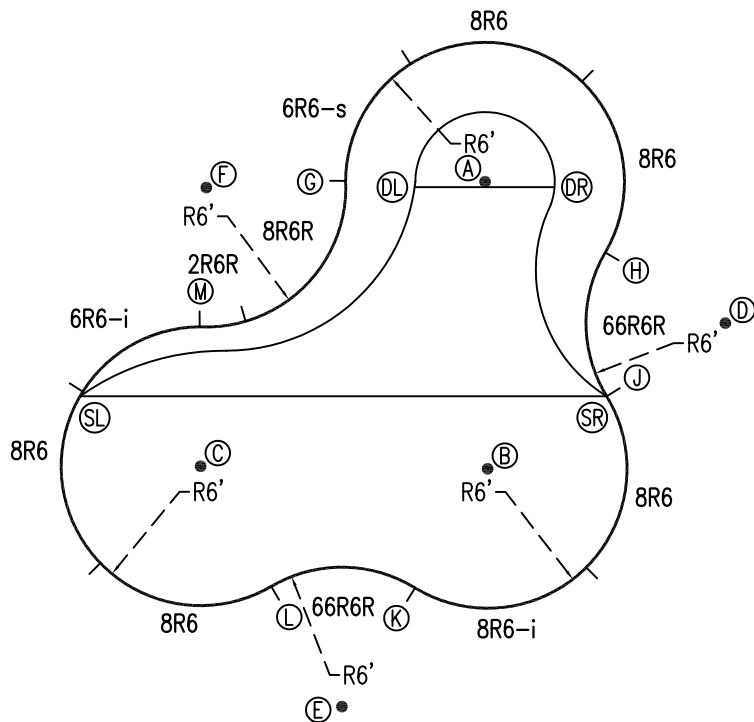
WIDTH	AREA	NET INCREASES FOR:			
		STEPS	DIVING	SLIDE	ROLLER
2'	179	13	27	24	10
2'6"	228	17	31	20	10
3'	278	20	36	16	10

All Figures Represent "Sq Ft"

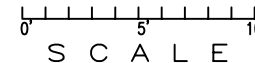


INSTALLATION DATA

From Point "A" to:-		From Point "B" to:-	
B	12'-4 1/4"	B	12'-4 1/4"
C	17'-3 3/4"	C	12'-4 1/4"
D	12'-0"	D	12'-0"
E	23'-4 7/8"	E	12'-0"
F	12'-0"	F	17'-1 3/8"
G	6'-0"	G	13'-9 7/8"
H	6'-0"	H	10'-7 1/8"
J	10'-7 1/4"	J	6'-0"
K	17'-8 3/4"	K	6'-0"
L	19'-8 3/8"	L	10'-7 1/8"
M	13'-9 1/4"	M	13'-9 7/8"
SL	19'-8 5/8"	SL	17'-9 7/8"
SR	10'-7 1/4"	SR	6'-0"
DL	3'-0 1/2"	DL	12'-6 1/4"
DR	3'-0"	DR	12'-5 1/2"



*ALL DIMENSIONS ARE FINISHED



NOTICE

SWIMMING POOLS AND ACCESSORIES (INCLUDING DIVING BOARDS) ARE DANGEROUS WHEN IMPROPERLY USED OR INSTALLED. IT IS THE RESPONSIBILITY OF MUNICIPAL OFFICIALS, BUILDERS AND POOL OWNERS TO ADHERE TO ALL SAFETY RECOMMENDATIONS AND STANDARDS ISSUED BY THE POOL & HOT TUB COUNCIL, LOCAL AUTHORITIES AND EQUIPMENT MANUFACTURERS. PLEASE REFER TO DIVING BOARD MANUFACTURERS FOR CORRECT POSITIONING AND INSTALLATION OF DIVING EQUIPMENT.

