

MISCELLANEOUS INFORMATION

PERIMETER:	71'
SURFACE AREA:	296 SQ FT
VOLUME:	7268 IMP GALS 33069 LITER

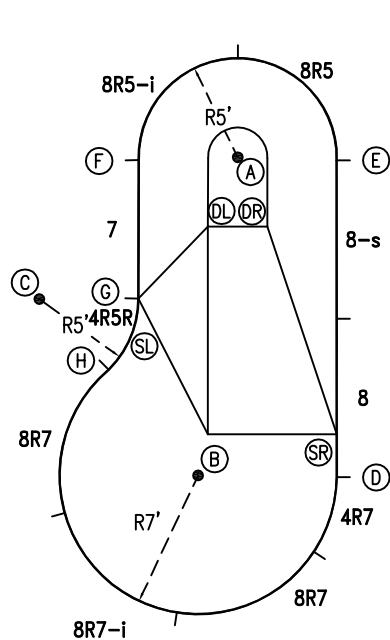
CONCRETE DECK INFO

WIDTH	AREA	NET INCREASES FOR:			
		STEPS	DIVING	SLIDE	ROLLER
2'	155	13	27	24	10
2'6"	197	17	31	20	10
3'	241	20	36	16	10

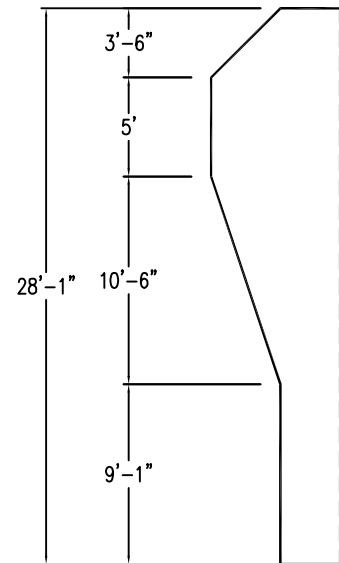
All Figures Represent "Sq Ft"

PARTS LIST

CODE	QTY	DESCRIPTION
8R7	2	8' Plain x 7' Radius
8R7-i	1	8' Return x 7' Radius
4R7	1	4' Plain x 7' Radius
8	1	8' Plain
8-s	1	8' Skimmer
8R5	1	8' Plain x 5' Radius
8R5-i	1	8' Return x 5' Radius
7	1	7' Plain
4R5R	1	4' Plain x 5' Reverse Radius
AF	10	A-Frame
S	20	Stakes
NB	60	Nuts & Bolts



6" WATER LINE



INSTALLATION DATA

From Point "A" to:-		From Point "B" to:-	
B	16'-2 1/4"	B	11'-11 3/4"
C	12'-3 3/4"	C	7'-0"
D	16'-10 3/4"	D	7'-0"
E	5'-0"	E	17'-4 3/4"
F	5'-0"	F	16'-2 1/2"
G	8'-8 3/4"	G	9'-5 1/4"
H	12'-6 1/2"	H	7'-0"
SL	8'-8 3/4"	SL	9'-5 1/4"
SR	14'-10 1/4"	SR	7'-3 1/2"
DL	3'-9 3/4"	DL	12'-7"
DR	3'-9 3/4"	DR	13'-0 1/2"

14'

*ALL DIMENSIONS ARE FINISHED

0 5 10
SCALE

NOTICE

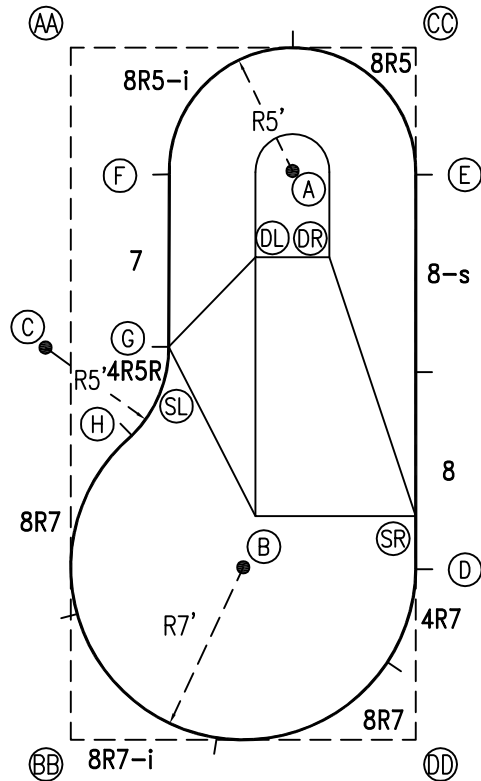
SWIMMING POOLS AND ACCESSORIES (INCLUDING DIVING BOARDS) ARE DANGEROUS WHEN IMPROPERLY USED OR INSTALLED. IT IS THE RESPONSIBILITY OF MUNICIPAL OFFICIALS, BUILDERS AND POOL OWNERS TO ADHERE TO ALL SAFETY RECOMMENDATIONS AND STANDARDS ISSUED BY THE POOL & HOT TUB COUNCIL, LOCAL AUTHORITIES AND EQUIPMENT MANUFACTURERS. PLEASE REFER TO DIVING BOARD MANUFACTURERS FOR CORRECT POSITIONING AND INSTALLATION OF DIVING EQUIPMENT.

HIGHBURY POOLS LTD

NASSAU - LEFT 10 x 14 x 28

DRAWING REFERENCE #
30-10-28-1

DRAWN BY: JK
REV. 11 JUL 13
SHEET 1 OF 2



EXTERNAL INSTALLATION DATA

AA TO:	BB TO:	CC TO:	DD TO:
AA --	AA 28'-0 3/4"	AA 14'-0"	AA 31'-4 1/2"
BB --	BB --	BB 31'-4 1/2"	BB 14'-0"
CC --	CC --	CC --	CC 28'-0 3/4"
A 10'-3 1/2"	A 24'-9 1/4"	A 7'-0 3/4"	A 23'-7 1/4"
B 22'-2 1/2"	B 9'-10 3/4"	B 22'-2 1/2"	B 9'-10 3/4"
C 12'-2 1/2"	C 15'-11 1/4"	C 19'-3 3/4"	C 21'-10 1/2"
D 25'-4 1/4"	D 15'-7 1/4"	D 21'-1 3/4"	D 6'-11"
E 14'-10 3/4"	E 26'-10 1/4"	E 5'-1 3/4"	E 22'-11"
F 6'-6"	F 23'-3 1/2"	F 11'-2 3/4"	F 25'-0 1/4"
G 12'-9 1/4"	G 16'-5"	G 15'-8 3/4"	G 18'-9 3/4"
H 15'-11"	H 12'-7"	H 19'-5 3/4"	H 16'-10 1/2"
SL 12'-9 1/4"	SL 16'-5"	SL 15'-8 3/4"	SL 18'-9 3/4"
SR 23'-7 1/4"	SR 16'-8 1/4"	SR 19'-0"	SR 9'-0 3/4"
DL 11'-3 3/4"	DL 20'-11 1/2"	DL 10'-8 1/2"	DL 20'-7 1/2"
DR 13'-6"	DR 22'-2 1/2"	DR 9'-2 1/4"	DR 19'-10 1/2"

DIAGONALS

From Point "D" to:-		From Point "E" to:-	
E	16'-0"	E	
F	18'-10 5/8"	F	10'-0"
G	13'-5 3/4"	G	12'-2 1/2"
H	12'-8 3/4"	H	15'-7 5/8"

NOTICE

SWIMMING POOLS AND ACCESSORIES (INCLUDING DIVING BOARDS) ARE DANGEROUS WHEN IMPROPERLY USED OR INSTALLED. IT IS THE RESPONSIBILITY OF MUNICIPAL OFFICIALS, BUILDERS AND POOL OWNERS TO ADHERE TO ALL SAFETY RECOMMENDATIONS AND STANDARDS ISSUED BY THE POOL & HOT TUB COUNCIL, LOCAL AUTHORITIES AND EQUIPMENT MANUFACTURERS. PLEASE REFER TO DIVING BOARD MANUFACTURERS FOR CORRECT POSITIONING AND INSTALLATION OF DIVING EQUIPMENT.

