

MISCELLANEOUS INFORMATION

PERIMETER:-	99'-0"
SURFACE AREA:	604.5 SQ FT
VOLUME:	17703 IMP GALS 80552 L

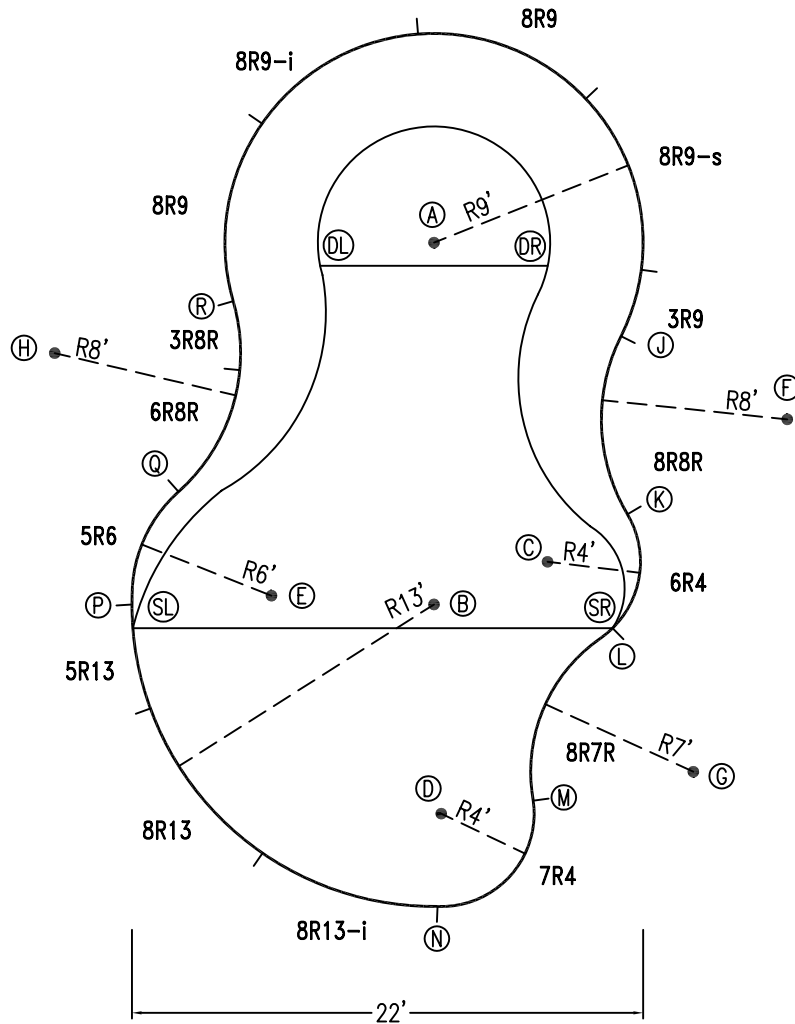
CONCRETE DECK INFO

WIDTH	AREA	NET INCREASES FOR:			
		STEPS	DIVING	SLIDE	ROLLER
2'	207	13	27	24	10
2'6"	263	17	31	20	10
3'	330	20	36	16	10

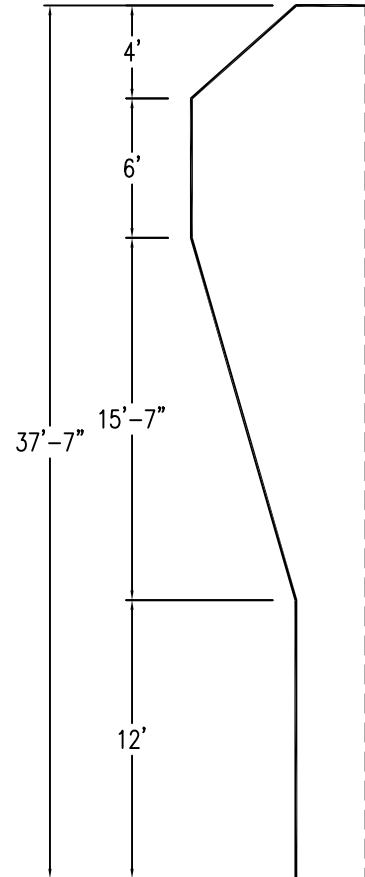
All Figures Represent "Sq Ft"

PARTS LIST

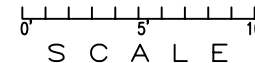
CODE	QTY	DESCRIPTION
8R13-i	1	8' Return x 13' Radius
8R13	1	8' Plain x 13' Radius
5R13	1	5' Plain x 13' Radius
8R9-s	1	8' Skimmer x 9' Radius
8R9-i	1	8' Return x 9' Radius
8R9	2	8' Plain x 9' Radius
3R9	1	3' Plain x 9' Radius
5R6	1	5' Plain x 6' Radius
7R4	1	7' Plain x 4' Radius
6R4	1	6' Plain x 4' Radius
8R8R	1	8' Plain x 8' Reverse Radius
6R8R	1	6' Plain x 8' Reverse Radius
3R8R	1	3' Plain x 8' Reverse Radius
8R7R	1	8' Plain x 7' Reverse Radius
AF	15	A-Frame
S	30	Stake
NB	90	Nuts & Bolts



6" WATER LINE - I -



*ALL DIMENSIONS ARE FINISHED



INSTALLATION DATA

From Point "A" to:-		From Point "B" to:-	
B	15'-6 7/8"	B	--
C	14'-6 7/8"	C	5'-2 5/8"
D	24'-6 7/8"	D	9'-0 1/8"
E	16'-8 3/4"	E	7'-0"
F	17'-0"	F	17'-1 7/8"
G	25'-4 3/8"	G	13'-3 3/8"
H	17'-0"	H	19'-6 7/8"
J	9'-0"	J	14'-0 7/8"
K	14'-4 1/4"	K	9'-2 1/4"
L	18'-3 3/8"	L	7'-9 1/8"
M	24'-4 3/4"	M	9'-5 5/8"
N	28'-6 7/8"	N	13'-0"
P	20'-3 3/8"	P	13'-0"
Q	15'-4 1/4"	Q	12'-0 1/8"
R	9'-0"	R	15'-7 7/8"
SL	21'-0 5/8"	SL	13'-0"
SR	18'-3 3/8"	SR	7'-9 1/8"
DL	5'-0"	DL	15'-4 1/2"
DR	5'-0"	DR	15'-4 1/2"

NOTICE

SWIMMING POOLS AND ACCESSORIES (INCLUDING DIVING BOARDS) ARE DANGEROUS WHEN IMPROPERLY USED OR INSTALLED. IT IS THE RESPONSIBILITY OF MUNICIPAL OFFICIALS, BUILDERS AND POOL OWNERS TO ADHERE TO ALL SAFETY RECOMMENDATIONS AND STANDARDS ISSUED BY THE POOL & HOT TUB COUNCIL, LOCAL AUTHORITIES AND EQUIPMENT MANUFACTURERS. PLEASE REFER TO DIVING BOARD MANUFACTURERS FOR CORRECT POSITIONING AND INSTALLATION OF DIVING EQUIPMENT.

HIGHBURY POOLS LTD

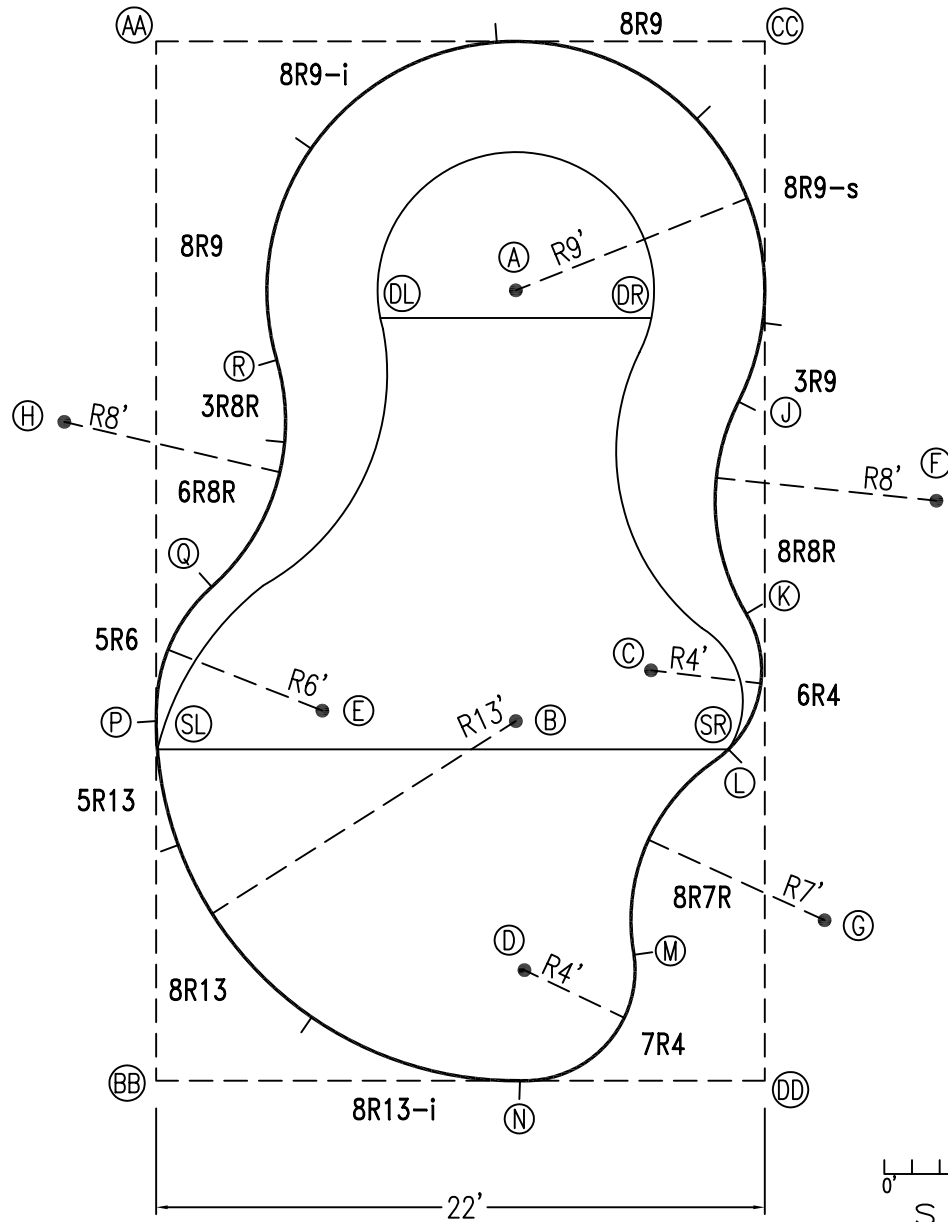
ODYSEE I - LEFT 18 X 22 X 37

DRAWING REFERENCE #
49-18-37-1

DRAWN BY: Q2NGUYEN
REV. 11 FEB 2007
SHEET 1 OF 2

EXTERNAL INSTALLATION DATA

AA TO:	BB TO:	CC TO:	DD TO:
AA ---	AA 37'-6 7/8"	AA 22'-0"	AA 43'-6 1/2"
BB ---	BB ---	BB 43'-6 1/2"	BB 22'-0"
CC ---	CC ---	CC ---	CC 37'-6 7/8"
A 15'-9 3/4"	A 31'-4 3/4"	A 12'-8 3/4"	A 29'-11 1/2"
B 27'-9 5/8"	B 18'-4 5/8"	B 26'-2"	B 15'-9 3/4"
C 28'-11 1/8"	C 23'-2 7/8"	C 23'-1 1/4"	C 15'-4 3/4"
D 36'-1 3/8"	D 13'-10 3/4"	D 34'-8 1/8"	D 9'-6 3/4"
E 24'-11 1/8"	E 14'-7 7/8"	E 29'-0"	E 20'-10 1/4"
F 32'-8 3/4"	F 35'-1 3/4"	F 17'-8 3/4"	F 21'-10 3/8"
G 39'-10 7/8"	G 24'-10 1/8"	G 31'-10 1/8"	G 6'-2 1/4"
H 14'-1 3/4"	H 24'-0 5/8"	H 28'-9 3/4"	H 34'-9 1/8"
J 24'-9"	J 32'-4"	J 13'-0 3/4"	J 24'-6 3/4"
K 29'-8 5/8"	K 27'-2 3/8"	K 20'-8 1/2"	K 16'-10 3/4"
L 32'-10 7/8"	L 23'-10 7/8"	L 25'-7 1/2"	L 12'-0 5/8"
M 37'-3 1/8"	M 17'-10 3/8"	M 33'-4 1/4"	M 6'-6 3/4"
N 39'-9 5/8"	N 13'-1 7/8"	N 38'-7 1/8"	N 8'-10 1/8"
P 24'-6 7/8"	P 13'-0"	P 32'-11 3/4"	P 25'-6 5/8"
Q 19'-9 7/8"	Q 17'-11 5/8"	Q 28'-0 7/8"	Q 26'-9 5/8"
R 12'-3 3/4"	R 26'-5"	R 21'-0 3/4"	R 31'-5 5/8"
SL 25'-7 1/8"	SL 11'-11 3/4"	SL 33'-8 5/8"	SL 25'-0 1/4"
SR 32'-10 7/8"	SR 23'-10 7/8"	SR 25'-7 1/2"	SR 12'-0 5/8"
DL 12'-10 3/8"	DL 28'-8 7/8"	DL 17'-1 1/2"	DL 30'-10 1/2"
DR 20'-6"	DR 32'-10 1/2"	DR 10'-9 3/4"	DR 27'-10 1/2"



NOTICE

SWIMMING POOLS AND ACCESSORIES (INCLUDING DIVING BOARDS) ARE DANGEROUS WHEN IMPROPERLY USED OR INSTALLED. IT IS THE RESPONSIBILITY OF MUNICIPAL OFFICIALS, BUILDERS AND POOL OWNERS TO ADHERE TO ALL SAFETY RECOMMENDATIONS AND STANDARDS ISSUED BY THE POOL & HOT TUB COUNCIL, LOCAL AUTHORITIES AND EQUIPMENT MANUFACTURERS. PLEASE REFER TO DIVING BOARD MANUFACTURERS FOR CORRECT POSITIONING AND INSTALLATION OF DIVING EQUIPMENT.

HIGHBURY POOLS LTD

ODYSEE I - LEFT 18x22x37

DRAWING REFERENCE #
49-18-37-1

DRAWN BY: Q2NGUYEN
REV. 11 FEB 2007
SHEET 2 OF 2