

**MISCELLANEOUS INFORMATION**

PERIMETER:	64'1"
SURFACE AREA:	265 SQ FT
VOLUME:	6350 IMP GALS 28892 LITER

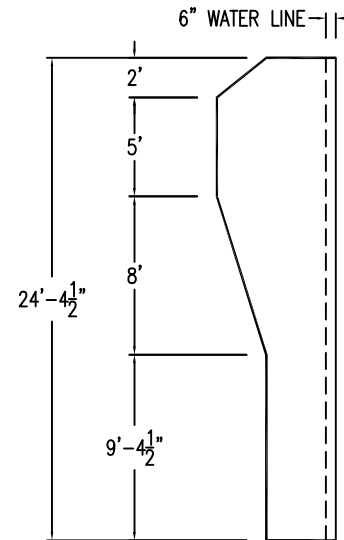
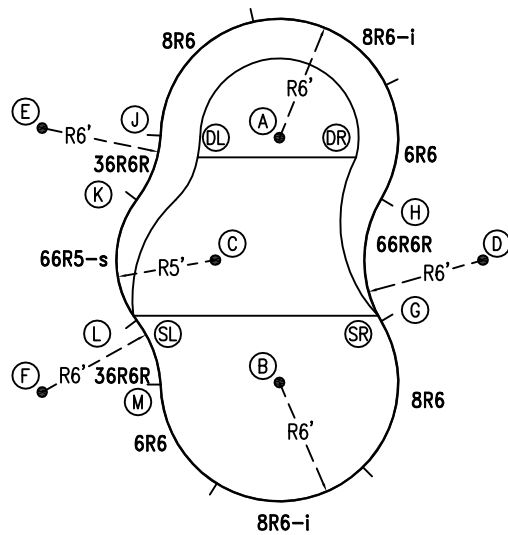
**CONCRETE DECK INFO**

WIDTH	AREA	NET INCREASES FOR:			
		STEPS	DIVING	SLIDE	ROLLER
2'	141	13	27	24	10
2'6"	180	17	31	20	10
3'	221	20	36	16	10

All Figures Represent "Sq Ft"

**PARTS LIST**

CODE	QTY	DESCRIPTION
8R6	2	8' Plain x 6' Radius
8R6-i	2	8' Return x 6' Radius
6R6	2	6' Plain x 6' Radius
66R6R	1	6'6" Plain x 6' Reverse Radius
36R6R	2	3'6" Plain x 6' Reverse Radius
66R5-s	1	6'6" Skimmer x 5' Radius
AF	10	A-Frame
S	20	Stakes
NB	60	Nuts & Bolts



**INSTALLATION DATA**

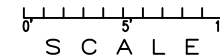
From Point "A" to:-		From Point "B" to:-	
B	12'-4 1/2"	B	6'-11 3/4"
C	6'-11 3/4"	C	6'-11 3/4"
D	12'-0"	D	12'-0"
E	12'-0"	E	17'-6 3/4"
F	17'-6 3/4"	F	12'-0"
G	10'-7 1/4"	G	6'-0"
H	6'-0"	H	10'-7 1/4"
J	6'-0"	J	13'-10"
K	7'-10 1/2"	K	11'-8 1/2"
L	11'-8 1/2"	L	7'-10 1/2"
M	13'-10"	M	6'-0"
SL	11'-7 1/2"	SL	8'-1 1/4"
SR	10'-3 1/2"	SR	6'-0 1/4"
DL	4'-2 3/4"	DL	12'-1"
DR	4'-0"	DR	12'-0"

**NOTICE**

SWIMMING POOLS AND ACCESSORIES (INCLUDING DIVING BOARDS) ARE DANGEROUS WHEN IMPROPERLY USED OR INSTALLED. IT IS THE RESPONSIBILITY OF MUNICIPAL OFFICIALS, BUILDERS AND POOL OWNERS TO ADHERE TO ALL SAFETY RECOMMENDATIONS AND STANDARDS ISSUED BY THE POOL & HOT TUB COUNCIL, LOCAL AUTHORITIES AND EQUIPMENT MANUFACTURERS. PLEASE REFER TO DIVING BOARD MANUFACTURERS FOR CORRECT POSITIONING AND INSTALLATION OF DIVING EQUIPMENT.

14'-3"

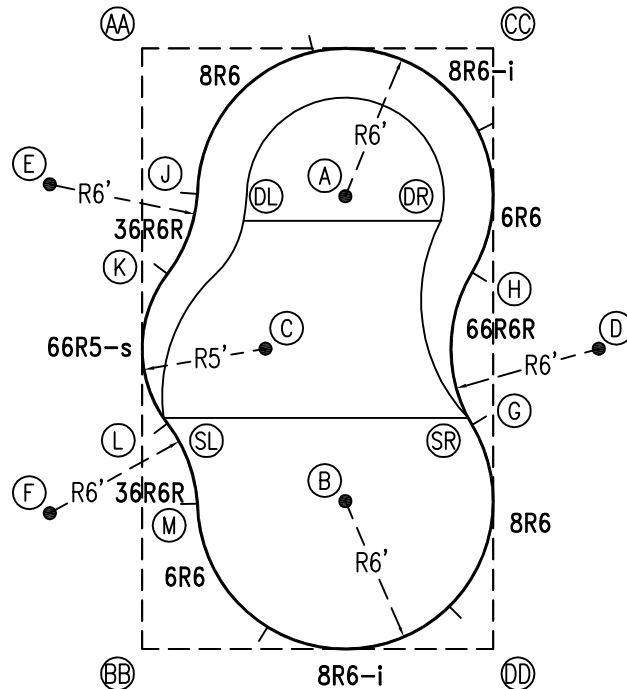
\*ALL DIMENSIONS ARE FINISHED



PERIMETER: 64'1"

EXTERNAL INSTALLATION DATA

AA TO:	BB TO:	CC TO:	DD TO:
AA ---	AA 24'-4 1/2"	AA 14'-2 3/4"	AA 28'-2 3/4"
BB ---	BB ---	BB 28'-2 3/4"	BB 14'-2 3/4"
CC ---	CC ---	CC ---	CC 24'-4 1/2"
A 10'-2 1/4"	A 20'-1 1/2"	A 8'-5 3/4"	A 19'-3 3/4"
B 20'-1 1/2"	B 10'-2 1/4"	B 19'-3 3/4"	B 8'-5 3/4"
C 13'-2"	C 13'-2"	C 15'-3 1/2"	C 15'-3 1/2"
D 22'-2"	D 22'-2"	D 12'-10 3/4"	D 12'-10 3/4"
E 6'-8"	E 19'-2 3/4"	E 18'-9 3/4"	E 26'-0 3/4"
F 19'-2 3/4"	F 6'-8"	F 26'-0 3/4"	F 18'-9 3/4"
G 20'-3 3/4"	G 16'-2"	G 15'-3 1/2"	G 9'-1 1/2"
H 16'-2"	H 20'-3 3/4"	H 9'-1 1/2"	H 15'-3 1/2"
J 6'-3 3/4"	J 18'-7 1/4"	J 13'-4 1/2"	J 22'-0 1/4"
K 9'-2 1/2"	K 15'-3"	K 16'-0 3/4"	K 20'-1 3/4"
L 15'-3"	L 9'-2 1/2"	L 20'-1 3/4"	L 16'-0 3/4"
M 18'-7 1/4"	M 6'-3 3/4"	M 22'-0 1/4"	M 13'-4 1/2"
SL 15'-0 1/4"	SL 9'-4 3/4"	SL 20'-1"	SL 16'-3 3/4"
SR 20'-0"	SR 16'-2 1/2"	SR 15'-0 1/4"	SR 9'-5"
DL 8'-1 1/4"	DL 17'-10 1/4"	DL 12'-3 3/4"	DL 20'-1 1/4"
DR 13'-11 3/4"	DR 21'-2"	DR 7'-3 3/4"	DR 17'-5 3/4"

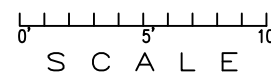


DIAGONALS

From Point "G" to:-		From Point "H" to:-	
H	6'-2 1/4"	H	
J	14'-6 3/4"	J	11'-7 1/8"
K	13'-9 1/2"	K	12'-4 1/4"
L	12'-4 1/4"	L	13'-9 1/2"
M	11'-7 1/8"	M	14'-6 3/4"

NOTICE

SWIMMING POOLS AND ACCESSORIES (INCLUDING DIVING BOARDS) ARE DANGEROUS WHEN IMPROPERLY USED OR INSTALLED. IT IS THE RESPONSIBILITY OF MUNICIPAL OFFICIALS, BUILDERS AND POOL OWNERS TO ADHERE TO ALL SAFETY RECOMMENDATIONS AND STANDARDS ISSUED BY THE POOL & HOT TUB COUNCIL, LOCAL AUTHORITIES AND EQUIPMENT MANUFACTURERS. PLEASE REFER TO DIVING BOARD MANUFACTURERS FOR CORRECT POSITIONING AND INSTALLATION OF DIVING EQUIPMENT.



HIGHBURY POOLS LTD

ODYSSE II - RIGHT 12 x 14 x 24

DRAWING REFERENCE #  
50-12-24-2

DRAWN BY:JK  
REV. 12 AUG 13  
SHEET 2 OF 2