

### MISCELLANEOUS INFORMATION

PERIMETER:	67'
SURFACE AREA:	281 SQ FT
VOLUME:	6920 IMP GALS 31486 LITER

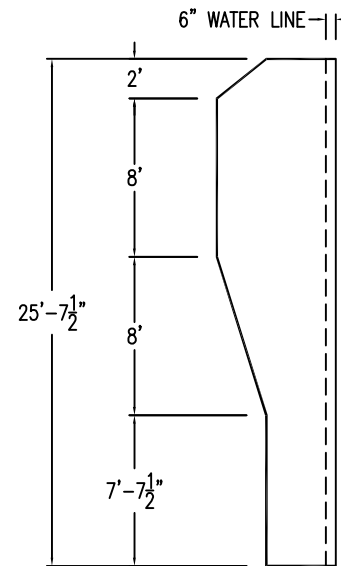
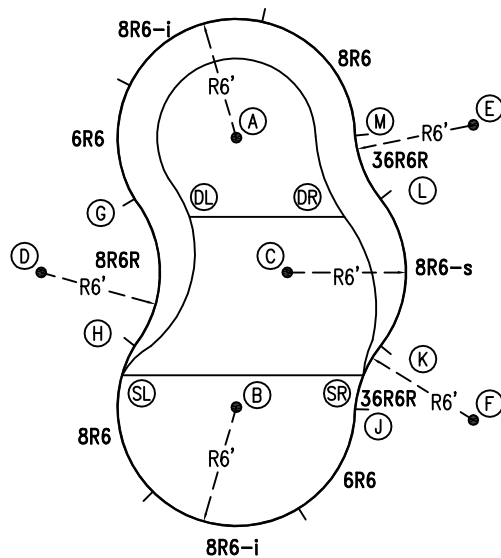
### CONCRETE DECK INFO

WIDTH	AREA	NET INCREASES FOR:			
		STEPS	DIVING	SLIDE	ROLLER
2'	146	13	27	24	10
2'6"	187	17	31	20	10
3'	229	20	36	16	10

All Figures Represent "Sq Ft"

### PARTS LIST

CODE	QTY	DESCRIPTION
8R6	2	8' Plain x 6' Radius
8R6-i	2	8' Return x 6' Radius
6R6	2	6' Plain x 6' Radius
8R6R	1	8' Plain x 6' Reverse Radius
36R6R	2	3'6" Plain x 6' Reverse Radius
8R6-s	1	8' Skimmer x 6' Radius
AF	10	A-Frame
S	20	Stakes
NB	60	Nuts & Bolts

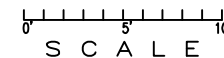


### INSTALLATION DATA

From Point "A" to:-		From Point "B" to:-	
B	13'-7 1/4"	B	7'-3 1/4"
C	7'-3 1/4"	C	7'-3 1/4"
D	11'-11 3/4"	D	11'-11 3/4"
E	11'-11 3/4"	E	18'-7 1/2"
F	18'-7 1/2"	F	11'-11 3/4"
G	6'-0"	G	11'-8 1/2"
H	11'-8 1/2"	H	6'-0"
J	14'-11 1/2"	J	6'-0"
K	12'-9 1/2"	K	7'-11"
L	7'-11"	L	12'-9 1/2"
M	6'-0"	M	14'-11 1/2"
SL	13'-3 3/4"	SL	6'-0"
SR	13'-7 1/4"	SR	6'-7 1/4"
DL	4'-7 3/4"	DL	9'-10 3/4"
DR	6'-9 1/4"	DR	11'-0 3/4"

14'-7"

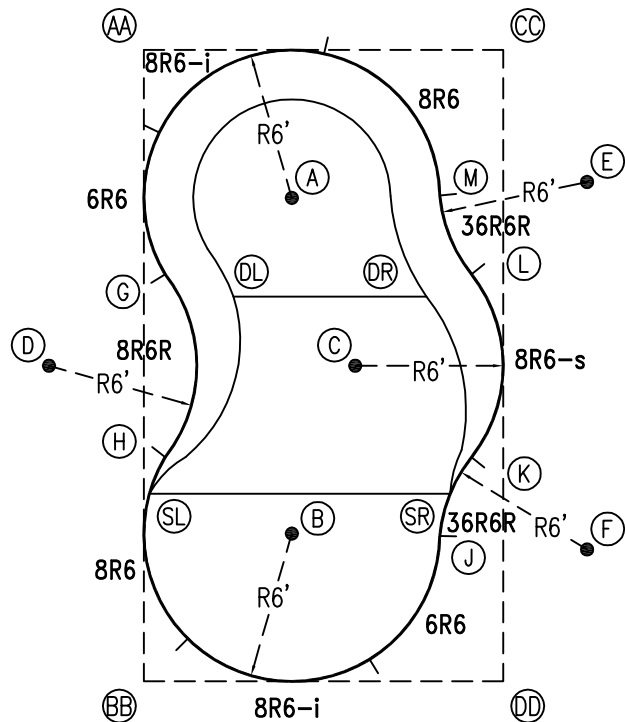
\*ALL DIMENSIONS ARE FINISHED



### NOTICE

SWIMMING POOLS AND ACCESSORIES (INCLUDING DIVING BOARDS) ARE DANGEROUS WHEN IMPROPERLY USED OR INSTALLED. IT IS THE RESPONSIBILITY OF MUNICIPAL OFFICIALS, BUILDERS AND POOL OWNERS TO ADHERE TO ALL SAFETY RECOMMENDATIONS AND STANDARDS ISSUED BY THE POOL & HOT TUB COUNCIL, LOCAL AUTHORITIES AND EQUIPMENT MANUFACTURERS. PLEASE REFER TO DIVING BOARD MANUFACTURERS FOR CORRECT POSITIONING AND INSTALLATION OF DIVING EQUIPMENT.

PERIMETER: 67'



EXTERNAL INSTALLATION DATA

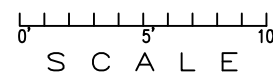
AA TO:	BB TO:	CC TO:	DD TO:
AA ---	AA 25'-7 1/4"	AA 14'-6 3/4"	AA 29'-5 1/2"
BB ---	BB ---	BB 29'-5 1/2"	BB 14'-6 3/4"
CC ---	CC ---	CC ---	CC 25'-7 1/4"
A 8'-5 3/4"	A 20'-6"	A 10'-5 1/2"	A 21'-4 3/4"
B 20'-6"	B 8'-5 3/4"	B 21'-4 3/4"	B 10'-5 1/2"
C 15'-4 3/4"	C 15'-4 3/4"	C 14'-1 3/4"	C 14'-1 3/4"
D 13'-4 1/2"	D 13'-4 1/2"	D 22'-5 1/4"	D 22'-5 1/4"
E 18'-9"	E 27'-1"	E 6'-4"	E 20'-6 1/2"
F 27'-1"	F 18'-9"	F 20'-6 1/2"	F 6'-4"
G 9'-1 1/2"	G 16'-6 1/2"	G 16'-5 1/2"	G 21'-5 1/2"
H 16'-6 1/2"	H 9'-1 1/2"	H 21'-5 1/2"	H 16'-5 1/2"
J 23'-0 3/4"	J 13'-4 1/4"	J 19'-10 1/2"	J 6'-5"
K 21'-2 1/4"	K 16'-1 1/4"	K 16'-6 3/4"	K 9'-2 1/4"
L 16'-1 1/4"	L 21'-2 1/4"	L 9'-2 1/4"	L 16'-6 3/4"
M 13'-4 1/4"	M 23'-0 3/4"	M 6'-5"	M 19'-10 1/2"
SL 18'-0"	SL 7'-7 1/4"	SL 23'-0 1/4"	SL 16'-2 3/4"
SR 21'-10 1/4"	SR 14'-6 3/4"	SR 18'-1 1/2"	SR 7'-10 3/4"
DL 10'-7 1/2"	DL 16'-0 1/4"	DL 14'-9 3/4"	DL 19'-0 3/4"
DR 15'-2 1/2"	DR 19'-4 1/2"	DR 10'-5 1/2"	DR 15'-11"

DIAGONALS

From Point "G" to:-	From Point "H" to:-
H 7'-5"	H
J 15'-4 3/4"	J 11'-7 1/8"
K 14'-5 5/8"	K 12'-5 1/8"
L 12'-5 1/8"	L 14'-5 5/8"
M 11'-7 1/8"	M 15'-4 3/4"

NOTICE

SWIMMING POOLS AND ACCESSORIES (INCLUDING DIVING BOARDS) ARE DANGEROUS WHEN IMPROPERLY USED OR INSTALLED. IT IS THE RESPONSIBILITY OF MUNICIPAL OFFICIALS, BUILDERS AND POOL OWNERS TO ADHERE TO ALL SAFETY RECOMMENDATIONS AND STANDARDS ISSUED BY THE POOL & HOT TUB COUNCIL, LOCAL AUTHORITIES AND EQUIPMENT MANUFACTURERS. PLEASE REFER TO DIVING BOARD MANUFACTURERS FOR CORRECT POSITIONING AND INSTALLATION OF DIVING EQUIPMENT.



HIGHBURY POOLS LTD

ODYSEE II - LEFT 12 x 15 x 26

DRAWING REFERENCE #  
50-12-26-1

DRAWN BY: JK  
REV. 13 AUG 13  
SHEET 2 OF 2