

MISCELLANEOUS INFORMATION

PERIMETER:	52'
SURFACE AREA:	181 SQ FT
VOLUME:	4194 IMP GALS 19083 LITER

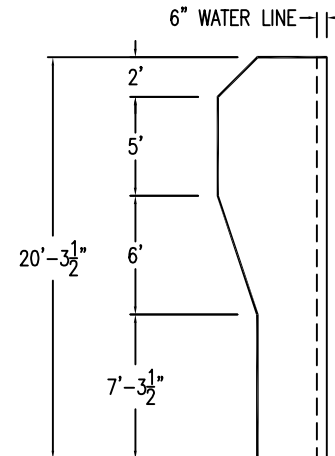
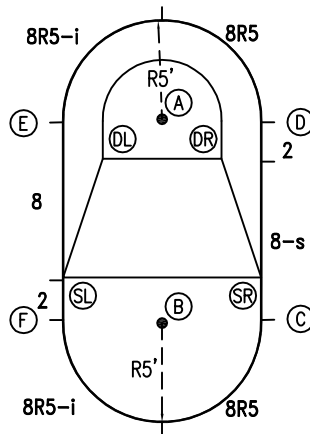
CONCRETE DECK INFO

WIDTH	AREA	NET INCREASES FOR:			
		STEPS	DIVING	SLIDE	ROLLER
2'	117	13	27	24	10
2'6"	150	17	31	20	10
3'	185	20	36	16	10

All Figures Represent "Sq Ft"

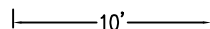
PARTS LIST

CODE	QTY	DESCRIPTION
8R5-i	2	8' Return x 5' Radius
8R5	2	8' Plain x 5' Radius
8-s	1	8' Skimmer
2	2	2' Plain
8	1	8' Plain
AF	8	A-Frame
S	16	Stakes
NB	48	Nuts & Bolts

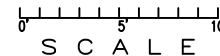


INSTALLATION DATA

From Point "A" to:-		From Point "B" to:-	
B	10'-3 1/2"	B	5'-0"
C	11'-3 3/4"	C	11'-3 3/4"
D	5'-0"	D	11'-3 3/4"
E	5'-0"	E	11'-3 3/4"
F	11'-3 3/4"	F	5'-0"
SL	9'-5 1/4"	SL	5'-5 3/4"
SR	9'-5 1/4"	SR	5'-5 3/4"
DL	3'-7 1/4"	DL	8'-9 3/4"
DR	3'-7 1/4"	DR	8'-9 3/4"



*ALL DIMENSIONS ARE FINISHED



NOTICE

SWIMMING POOLS AND ACCESSORIES (INCLUDING DIVING BOARDS) ARE DANGEROUS WHEN IMPROPERLY USED OR INSTALLED. IT IS THE RESPONSIBILITY OF MUNICIPAL OFFICIALS, BUILDERS AND POOL OWNERS TO ADHERE TO ALL SAFETY RECOMMENDATIONS AND STANDARDS ISSUED BY THE POOL & HOT TUB COUNCIL, LOCAL AUTHORITIES AND EQUIPMENT MANUFACTURERS. PLEASE REFER TO DIVING BOARD MANUFACTURERS FOR CORRECT POSITIONING AND INSTALLATION OF DIVING EQUIPMENT.

HIGHBURY POOLS LTD

OVAL - 10 x 20

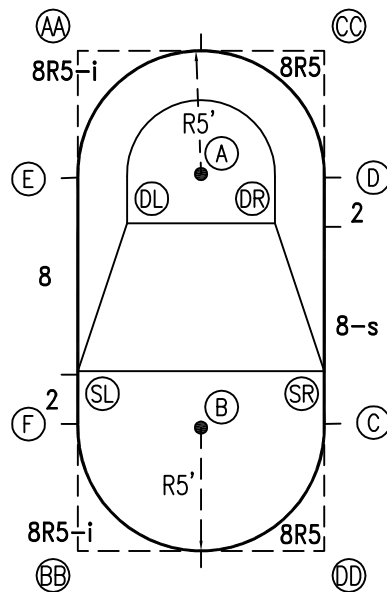
DRAWING REFERENCE #
53-10-20-1

DRAWN BY: JK
REV. 29 JUL 13
SHEET 1 OF 2

PERIMETER: 52'

EXTERNAL INSTALLATION DATA

AA TO:	BB TO:	CC TO:	DD TO:
AA --	AA 20'-3 1/2"	AA 10'-0"	AA 22'-7 1/2"
BB --	BB --	BB 22'-7 1/2"	BB 10'-0"
CC --	CC --	CC --	CC 20'-3 1/2"
A 7'-0 3/4"	A 16'-1"	A 7'-0 3/4"	A 16'-1"
B 16'-1"	B 7'-0 3/4"	B 16'-1"	B 7'-0 3/4"
C 18'-1 3/4"	C 11'-2 3/4"	C 15'-1 3/4"	C 5'-1 3/4"
D 11'-2 3/4"	D 18'-1 3/4"	D 5'-1 3/4"	D 15'-1 3/4"
E 5'-1 3/4"	E 15'-1 3/4"	E 11'-2 3/4"	E 18'-1 3/4"
F 15'-1 3/4"	F 5'-1 3/4"	F 18'-1 3/4"	F 11'-2 3/4"
SL 13'-0"	SL 7'-3 1/2"	SL 16'-4 3/4"	SL 12'-4 1/2"
SR 16'-4 3/4"	SR 12'-4 1/2"	SR 13'-0"	SR 7'-3 1/2"
DL 7'-3 1/4"	DL 13'-5 1/4"	DL 10'-7 1/2"	DL 15'-6"
DR 10'-7 1/2"	DR 15'-6"	DR 7'-3 1/4"	DR 13'-5 1/4"

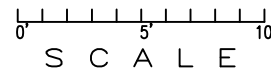


DIAGONALS

From Point "C" to:-		From Point "D" to:-	
D	10'-0"	D	
E	14'-1 3/4"	E	10'-0"
F	10'-0"	F	14'-1 5/8"

NOTICE

SWIMMING POOLS AND ACCESSORIES (INCLUDING DIVING BOARDS) ARE DANGEROUS WHEN IMPROPERLY USED OR INSTALLED. IT IS THE RESPONSIBILITY OF MUNICIPAL OFFICIALS, BUILDERS AND POOL OWNERS TO ADHERE TO ALL SAFETY RECOMMENDATIONS AND STANDARDS ISSUED BY THE POOL & HOT TUB COUNCIL, LOCAL AUTHORITIES AND EQUIPMENT MANUFACTURERS. PLEASE REFER TO DIVING BOARD MANUFACTURERS FOR CORRECT POSITIONING AND INSTALLATION OF DIVING EQUIPMENT.



HIGHBURY POOLS LTD

OVAL - 10 x 20

DRAWING REFERENCE #
53-10-20-1

DRAWN BY:JK
REV. 29 JUL 13
SHEET 2 OF 2