

**MISCELLANEOUS INFORMATION**

PERIMETER:	60'9"
SURFACE AREA:	243 SQ FT
VOLUME:	5284 IMP GALS 24042 LITER

**PARTS LIST**

CODE	QTY	DESCRIPTION
5R6	2	5' Plain x 6' Radius
3'9	2	3'9" Plain
3'9-s	1	3'9" Skimmer
8R6-i	2	8' Return x 6' Radius
8R6	2	8' Plain x 6' Radius
39R9R	2	3'9" Plain x 9' Reverse Radius
AF	11	A-Frame
S	22	Stakes
NB	66	Nuts & Bolts

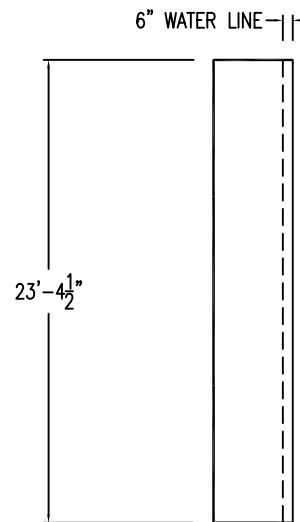
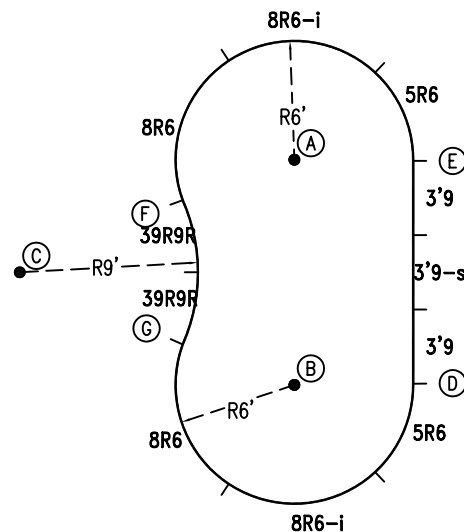
**CONCRETE DECK INFO**

WIDTH	AREA	NET INCREASES FOR:			
		STEPS	DIVING	SLIDE	ROLLER
2'	134	13	27	24	10
2'6"	171	17	31	20	10
3'	210	20	36	16	10

All Figures Represent "Sq Ft"

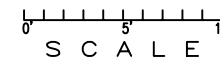
**INSTALLATION DATA**

From Point "A" to:-		From Point "B" to:-	
B	11'-4 1/2"	B	14'-11 3/4"
C	14'-11 3/4"	C	14'-11 3/4"
D	12'-9 1/2"	D	6'-0"
E	6'-0"	E	12'-9 1/2"
F	6'-0"	F	10'-10 3/4"
G	10'-10 3/4"	G	6'-0"



12'

\*ALL DIMENSIONS ARE FINISHED



**NOTICE**

SWIMMING POOLS AND ACCESSORIES (INCLUDING DIVING BOARDS) ARE DANGEROUS WHEN IMPROPERLY USED OR INSTALLED. IT IS THE RESPONSIBILITY OF MUNICIPAL OFFICIALS, BUILDERS AND POOL OWNERS TO ADHERE TO ALL SAFETY RECOMMENDATIONS AND STANDARDS ISSUED BY THE POOL & HOT TUB COUNCIL, LOCAL AUTHORITIES AND EQUIPMENT MANUFACTURERS. PLEASE REFER TO DIVING BOARD MANUFACTURERS FOR CORRECT POSITIONING AND INSTALLATION OF DIVING EQUIPMENT.

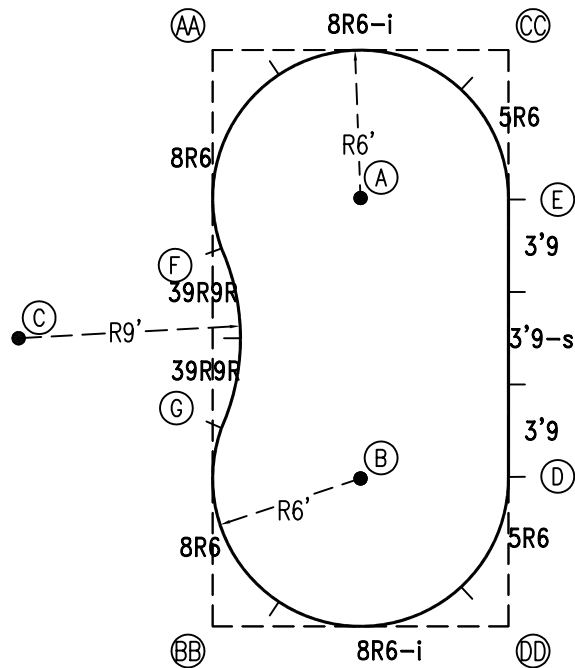
**HIGHBURY POOLS LTD**

KIDNEY -STRAIGHT BACK CRESCENT - LEFT 12 x 12 x 23

DRAWING REFERENCE #	DRAWN BY: JLG
480G-50-12-23-1	REV. 9 JUL 12
	SHEET 1 OF 2

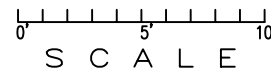
EXTERNAL INSTALLATION DATA

AA TO:	BB TO:	CC TO:	DD TO:
AA --	AA 23'-4 1/2"	AA 12'-0"	AA 26'-3 1/4"
BB --	BB --	BB 26'-3 1/4"	BB 12'-0"
CC --	CC --	CC --	CC 23'-4 1/2"
A 8'-5 3/4"	A 18'-4 1/2"	A 8'-5 3/4"	A 18'-4 1/2"
B 18'-4 1/2"	B 8'-5 3/4"	B 18'-4 1/2"	B 8'-5 3/4"
C 14'-1"	C 14'-1"	C 23'-0 1/2"	C 23'-0 1/2"
D 21'-0 3/4"	D 13'-5 1/4"	D 17'-3 3/4"	D 6'-0 3/4"
E 13'-5 1/4"	E 21'-0 3/4"	E 6'-0 3/4"	E 17'-3 3/4"
F 8'-0 1/2"	F 15'-4"	F 14'-1 3/4"	F 19'-2 3/4"
G 15'-4"	G 8'-0 1/2"	G 19'-2 3/4"	G 14'-1 3/4"



NOTICE

SWIMMING POOLS AND ACCESSORIES (INCLUDING DIVING BOARDS) ARE DANGEROUS WHEN IMPROPERLY USED OR INSTALLED. IT IS THE RESPONSIBILITY OF MUNICIPAL OFFICIALS, BUILDERS AND POOL OWNERS TO ADHERE TO ALL SAFETY RECOMMENDATIONS AND STANDARDS ISSUED BY THE POOL & HOT TUB COUNCIL, LOCAL AUTHORITIES AND EQUIPMENT MANUFACTURERS. PLEASE REFER TO DIVING BOARD MANUFACTURERS FOR CORRECT POSITIONING AND INSTALLATION OF DIVING EQUIPMENT.



HIGHBURY POOLS LTD

KIDNEY - STRAIGHT BACK CRESCENT - LEFT 12 x 12 x 23

DRAWING REFERENCE #  
480G-50-12-23-1

DRAWN BY: JLG  
REV. 9 JUL 12  
SHEET 2 OF 2