

**MISCELLANEOUS INFORMATION**

PERIMETER:	71'
SURFACE AREA:	335 SQ FT
VOLUME:	7295 IMP GALS 33192 LITER

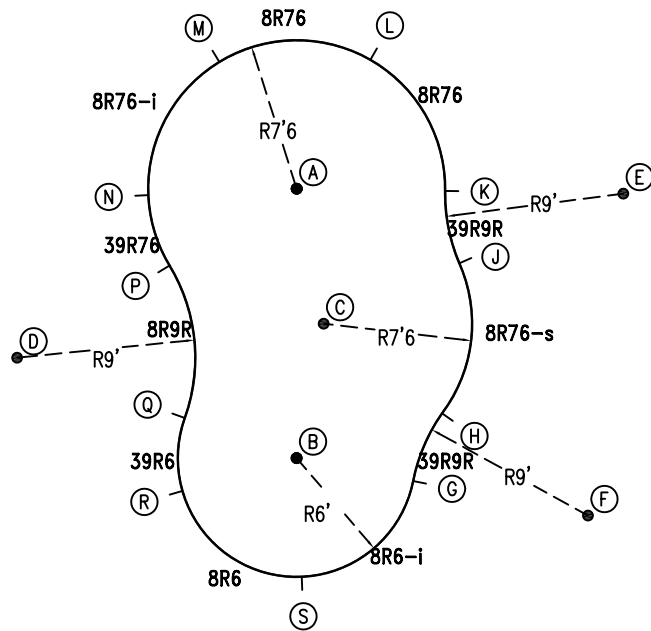
**PARTS LIST**

CODE	QTY	DESCRIPTION
8R6-i	1	8' Return x 6' Radius
39R9R	2	3'9" Plain x 9' Reverse Radius
8R76-s	1	8' Skimmer x 7'6 Radius
8R76	2	8' Plain x 7'6 Radius
8R76-i	1	8' Return x 7'6 Radius
39R76	1	3'9" Plain x 7'6 Radius
8R9R	1	8' Plain x 9' Reverse Radius
39R6	1	3'9" Plain x 6' Radius
8R6	1	8' Plain x 6' Radius
AF	11	A-Frame
S	22	Stakes
NB	66	Nuts & Bolts

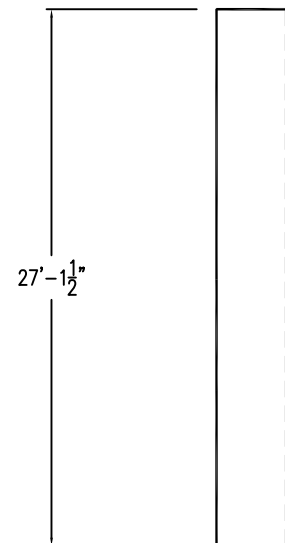
**CONCRETE DECK INFO**

WIDTH	AREA	NET INCREASES FOR:			
		STEPS	DIVING	SLIDE	ROLLER
2'	155	13	27	24	10
2'6"	197	17	31	20	10
3'	241	20	36	16	10

All Figures Represent "Sq Ft"

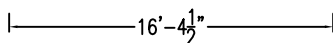


6" WATER LINE

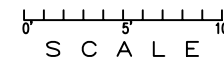


**INSTALLATION DATA**

From Point "A" to:-		From Point "B" to:-	
B	13'-7 1/4"	B	6'-11"
C	6'-11 1/4"	C	6'-11"
D	16'-5 3/4"	D	15'-0"
E	16'-5 3/4"	E	21'-2 3/4"
F	22'-1 1/4"	F	15'-0"
G	15'-10 3/4"	G	6'-0"
H	13'-6"	H	7'-8 1/4"
J	9'-0 1/2"	J	12'-9 3/4"
K	7'-5 3/4"	K	15'-5 1/4"
L	7'-5 3/4"	L	20'-5 1/2"
M	7'-6"	M	20'-4 1/2"
N	7'-5 3/4"	N	15'-2 3/4"
P	7'-5 3/4"	P	11'-7 3/4"
Q	12'-10 1/2"	Q	6'-0"
R	16'-3 3/4"	R	6'-0"
S	19'-7 1/4"	S	6'-0"

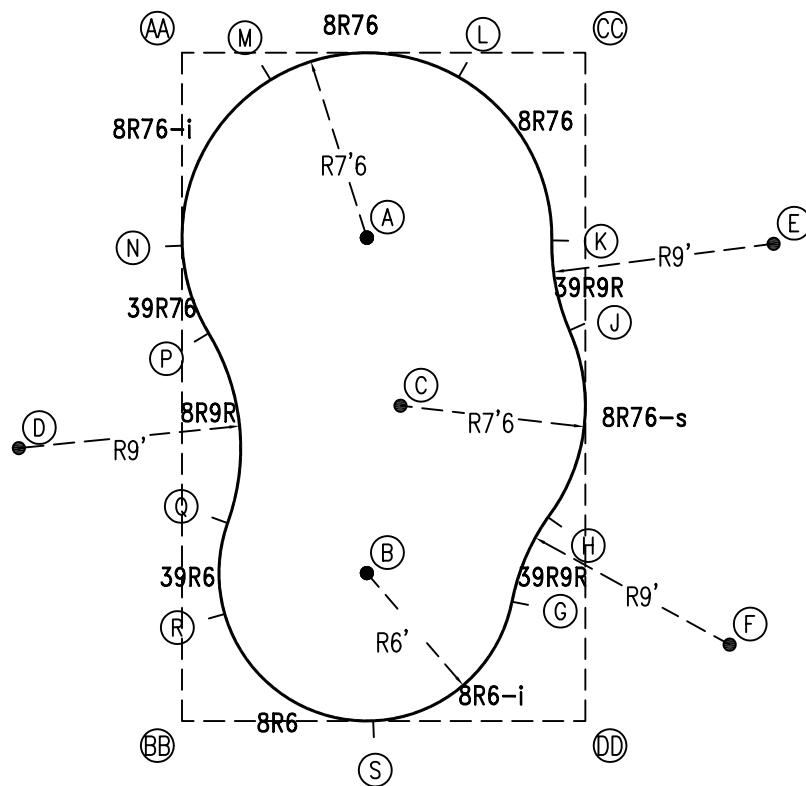


\*ALL DIMENSIONS ARE FINISHED



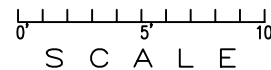
**NOTICE**

SWIMMING POOLS AND ACCESSORIES (INCLUDING DIVING BOARDS) ARE DANGEROUS WHEN IMPROPERLY USED OR INSTALLED. IT IS THE RESPONSIBILITY OF MUNICIPAL OFFICIALS, BUILDERS AND POOL OWNERS TO ADHERE TO ALL SAFETY RECOMMENDATIONS AND STANDARDS ISSUED BY THE POOL & HOT TUB COUNCIL, LOCAL AUTHORITIES AND EQUIPMENT MANUFACTURERS. PLEASE REFER TO DIVING BOARD MANUFACTURERS FOR CORRECT POSITIONING AND INSTALLATION OF DIVING EQUIPMENT.



EXTERNAL INSTALLATION DATA

AA TO:	BB TO:	CC TO:	DD TO:
AA --	AA 27'-1 1/4"	AA 16'-4 1/4"	AA 31'-7 3/4"
BB --	BB --	BB 31'-7 3/4"	BB 16'-4 1/4"
CC --	CC --	CC --	CC 27'-1 1/4"
A 10'-7 1/4"	A 20'-11 3/4"	A 11'-7 1/4"	A 21'-6 1/4"
B 22'-4 3/4"	B 9'-7 1/4"	B 22'-10 3/4"	B 10'-8 1/2"
C 16'-10"	C 15'-6 3/4"	C 16'-1 3/4"	C 14'-9 3/4"
D 17'-4 1/4"	D 12'-10 3/4"	D 28'-0 1/4"	D 25'-6"
E 25'-2 1/2"	E 30'-9 3/4"	E 10'-10 1/2"	E 20'-9 3/4"
F 32'-8 1/2"	F 22'-5"	F 24'-8 1/2"	F 6'-7 1/2"
G 25'-11 3/4"	G 14'-2 3/4"	G 22'-5 1/2"	G 5'-8 1/4"
H 23'-11 3/4"	H 16'-11 3/4"	H 18'-10 3/4"	H 8'-4 3/4"
J 19'-4"	J 22'-3 3/4"	J 11'-3 1/4"	J 15'-10 1/4"
K 16'-9 3/4"	K 24'-7"	K 7'-8 3/4"	K 19'-6 1/2"
L 11'-3"	L 28'-5"	L 5'-2 3/4"	L 26'-7 1/4"
M 3'-9"	M 26'-3"	M 12'-9 3/4"	M 28'-11 3/4"
N 7'-9 3/4"	N 19'-3 1/4"	N 18'-1 1/2"	N 25'-3 1/4"
P 11'-5"	P 15'-9 1/4"	P 19'-0 1/2"	P 21'-11"
Q 19'-2"	Q 8'-2 3/4"	Q 23'-11 1/2"	Q 16'-7"
R 22'-9 3/4"	R 4'-8"	R 27'-0 3/4"	R 15'-3"
S 28'-2 1/4"	S 7'-9"	S 28'-5 1/4"	S 8'-7 1/4"



NOTICE

SWIMMING POOLS AND ACCESSORIES (INCLUDING DIVING BOARDS) ARE DANGEROUS WHEN IMPROPERLY USED OR INSTALLED. IT IS THE RESPONSIBILITY OF MUNICIPAL OFFICIALS, BUILDERS AND POOL OWNERS TO ADHERE TO ALL SAFETY RECOMMENDATIONS AND STANDARDS ISSUED BY THE POOL & HOT TUB COUNCIL, LOCAL AUTHORITIES AND EQUIPMENT MANUFACTURERS. PLEASE REFER TO DIVING BOARD MANUFACTURERS FOR CORRECT POSITIONING AND INSTALLATION OF DIVING EQUIPMENT.

HIGHBURY POOLS LTD

RAINBOW - LEFT 15 x 16 x 27

DRAWING REFERENCE #  
480G-62-15-27-1

DRAWN BY: JLG  
REV. 6 JUL 12  
SHEET 2 OF 2