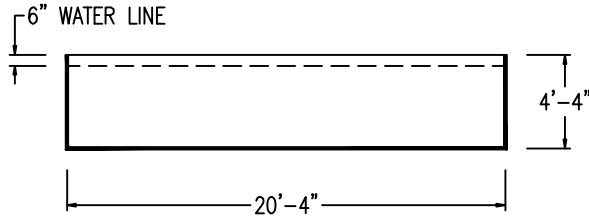


**MISCELLANEOUS INFORMATION**

PERIMETER:-	64'-0"
SURFACE AREA:	326 SQ FT
VOLUME:	7773 IMP GALS 35366 L

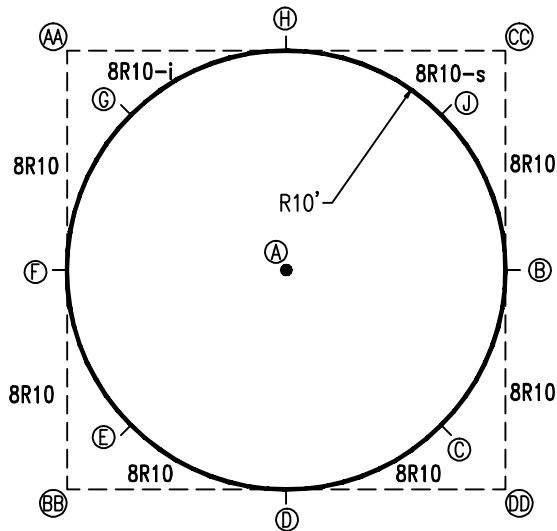
**PARTS LIST**

CODE	QTY	DESCRIPTION
8R10-s	1	8'-0" Skimmer x 10'-0" Rad
8R10-i	1	8'-0" Return x 10'-0" Rad
8R10	6	8'-0" Plain x 10'-0" Rad
NB	100	Nuts & Bolts



**INSTALLATION DATA**

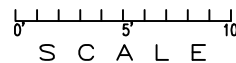
From Point "A" to:-		From Point "B" to:-	
B	10'-2 1/8"	B	
C	10'-2 1/8"	C	7'-9 1/2"
D	10'-2 1/8"	D	14'-4 3/4"
E	10'-2 1/8"	E	18'-9 5/8"
F	10'-2 1/8"	F	20'-4 1/8"
G	10'-2 1/8"	G	18'-9 5/8"
H	10'-2 1/8"	H	14'-4 3/4"
J	10'-2 1/8"	J	7'-9 1/2"



**EXTERNAL INSTALLATION DATA**

AA TO:	BB TO:	CC TO:	DD TO:
AA	--	AA	20'-4 1/8"
BB	--	BB	28'-9 1/2"
CC	--	CC	--
AA	14'-4 3/4"	AA	14'-4 3/4"
BB	22'-9"	BB	10'-2 1/8"
CC	24'-6 7/8"	CC	17'-7 5/8"
DD	22'-9 1/8"	DD	22'-9 1/8"
AA	17'-7 5/8"	AA	4'-2 5/8"
BB	10'-2 1/8"	BB	22'-9"
CC	4'-2 5/8"	CC	17'-7 1/2"
DD	10'-2 1/8"	DD	22'-9 1/8"
AA	17'-7 1/2"	AA	24'-6 7/8"
BB	24'-6 7/8"	BB	4'-2 5/8"
CC	4'-2 5/8"	CC	17'-7 5/8"
DD	17'-7 5/8"	DD	17'-7 5/8"

\*ALL DIMENSIONS ARE FINISHED



**NOTICE**

SWIMMING POOLS AND ACCESSORIES (INCLUDING DIVING BOARDS) ARE DANGEROUS WHEN IMPROPERLY USED OR INSTALLED. IT IS THE RESPONSIBILITY OF MUNICIPAL OFFICIALS, BUILDERS AND POOL OWNERS TO ADHERE TO ALL SAFETY RECOMMENDATIONS AND STANDARDS ISSUED BY THE POOL & HOT TUB COUNCIL, LOCAL AUTHORITIES AND EQUIPMENT MANUFACTURERS. PLEASE REFER TO DIVING BOARD MANUFACTURERS FOR CORRECT POSITIONING AND INSTALLATION OF DIVING EQUIPMENT.

**HIGHBURY POOLS LTD**

ON GROUND - ROUND 20' x 52"

DRAWING REFERENCE #  
52-0G 78-20-0-0

DRAWN BY: NCG  
REV. 16 JUN 2011  
SHEET 1 OF 1