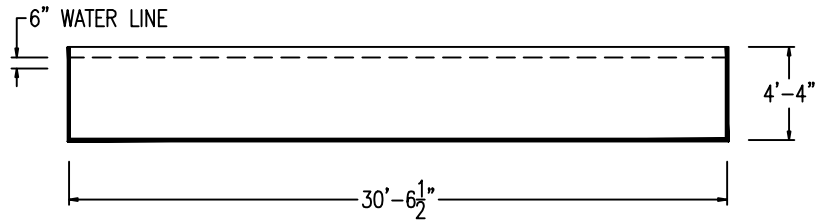


MISCELLANEOUS INFORMATION

PERIMETER:-	96'-0"
SURFACE AREA:	734 SQ FT
VOLUME:	17501 IMP GALS 79629 L

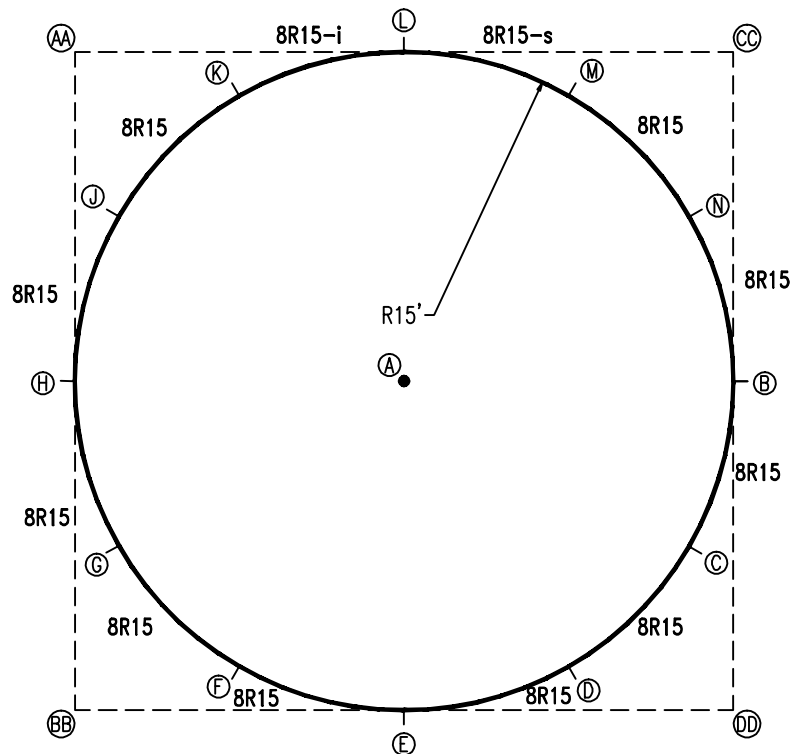
PARTS LIST

CODE	QTY	DESCRIPTION
8R15-s	1	8'-0" Skimmer x 15'-0" Rad
8R15-i	1	8'-0" Return x 15'-0" Rad
8R15	10	8'-0" Plain x 15'-0" Rad
NB	150	Nuts & Bolts



INSTALLATION DATA

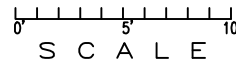
From Point "A" to:-	From Point "B" to:-
B 15'-3 3/8"	B 7'-11 1/8"
C 15'-3 3/8"	C 7'-11 1/8"
D 15'-3 1/2"	D 15'-3 1/2"
E 15'-3 1/4"	E 21'-7 1/4"
F 15'-3 3/8"	F 26'-5 5/8"
G 15'-3 3/8"	G 29'-6 1/4"
H 15'-3 3/8"	H 30'-6 3/4"
J 15'-3 1/4"	J 29'-6 1/8"
K 15'-3 1/2"	K 26'-5 3/4"
L 15'-3 1/4"	L 21'-7 3/8"
M 15'-3 3/8"	M 15'-3 1/2"
N 15'-3 3/8"	N 7'-10 7/8"



EXTERNAL INSTALLATION DATA

AA TO:	BB TO:	CC TO:	DD TO:
AA ---	AA 30'-6 1/2"	AA 30'-6 5/8"	AA 43'-2 3/8"
BB ---	BB ---	BB 43'-2 3/8"	BB 30'-6 5/8"
CC ---	CC ---	CC ---	CC 30'-6 1/2"
A 21'-7 1/4"	A 21'-7 1/4"	A 21'-7 1/4"	A 21'-7 1/4"
B 34'-1 7/8"	B 34'-1 7/8"	B 15'-3 3/8"	B 15'-3 1/8"
C 36'-6 7/8"	C 29'-6"	C 23'-0 1/4"	C 7'-10 1/2"
D 36'-6 7/8"	D 23'-0"	D 29'-6 1/4"	D 7'-10 7/8"
E 34'-1 3/4"	E 15'-3 1/4"	E 34'-1 7/8"	E 15'-3 1/2"
F 29'-6 1/8"	F 7'-10 3/4"	F 36'-6 7/8"	F 23'-0 1/4"
G 23'-0"	G 7'-10 3/4"	G 36'-6 7/8"	G 29'-6 1/8"
H 15'-3 1/4"	H 15'-3 1/4"	H 34'-1 7/8"	H 34'-1 7/8"
J 7'-10 7/8"	J 22'-11 7/8"	J 29'-6 1/8"	J 36'-6 3/4"
K 7'-10 3/4"	K 29'-6 1/8"	K 23'-0 1/4"	K 36'-6 7/8"
L 15'-3 1/4"	L 34'-1 3/4"	L 15'-3 3/8"	L 34'-1 3/4"
M 23'-0"	M 36'-6 7/8"	M 7'-10 7/8"	M 29'-6 1/8"
N 29'-6 1/4"	N 36'-6 7/8"	N 7'-10 7/8"	N 22'-11 7/8"

*ALL DIMENSIONS ARE FINISHED



NOTICE

SWIMMING POOLS AND ACCESSORIES (INCLUDING DIVING BOARDS) ARE DANGEROUS WHEN IMPROPERLY USED OR INSTALLED. IT IS THE RESPONSIBILITY OF MUNICIPAL OFFICIALS, BUILDERS AND POOL OWNERS TO ADHERE TO ALL SAFETY RECOMMENDATIONS AND STANDARDS ISSUED BY THE POOL & HOT TUB COUNCIL, LOCAL AUTHORITIES AND EQUIPMENT MANUFACTURERS. PLEASE REFER TO DIVING BOARD MANUFACTURERS FOR CORRECT POSITIONING AND INSTALLATION OF DIVING EQUIPMENT.

HIGHBURY POOLS LTD

ON GROUND - ROUND 30' x 52"

DRAWING REFERENCE #
52-0G 78-30-0-0

DRAWN BY: GB
REV. 15 FEB 2008
SHEET 1 OF 1