

MISCELLANEOUS INFORMATION

PERIMETER:	81'10"
SURFACE AREA:	440 SQ FT
VOLUME:	11872 IMP GALS 54018 LITER

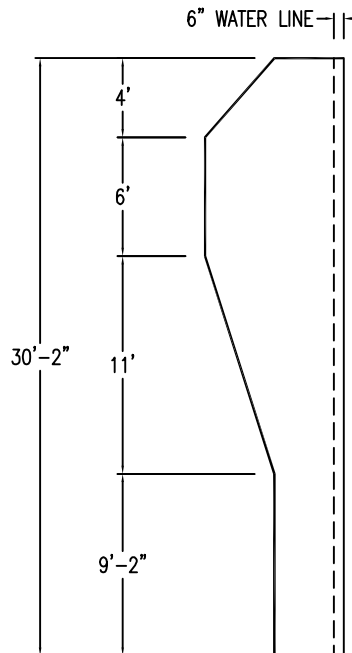
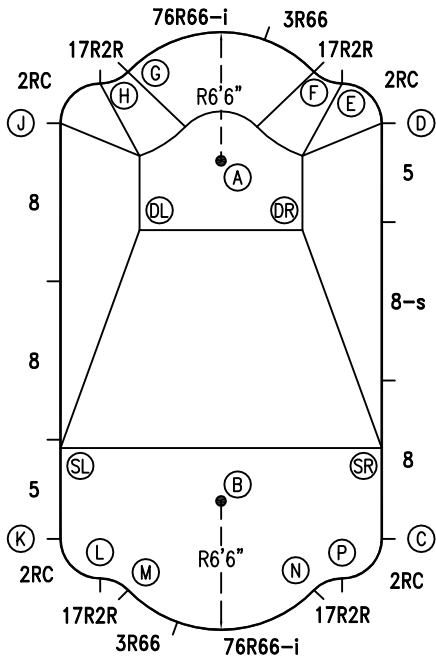
CONCRETE DECK INFO

WIDTH	AREA	NET INCREASES FOR:			
		STEPS	DIVING	SLIDE	ROLLER
2'	177	13	27	24	10
2'6"	224	17	31	20	10
3'	274	20	36	16	10

All Figures Represent "Sq Ft"

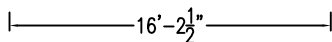
PARTS LIST

CODE	QTY	DESCRIPTION
2RC	4	3'2" Plain x 2' Rad Cnr
8	3	8' Plain
8-s	1	8' Skimmer
5	2	5' Plain
17R2R	4	1'7" Plain x 2' Reverse Radius
3R66	2	3' Plain x 6'6" Radius
76R66-i	2	7'6" Return x 6'6" Radius
AF	18	A-Frame
S	36	Stakes
NB	108	Nuts & Bolts

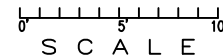


INSTALLATION DATA

From Point "A" to:-		From Point "B" to:-	
B	17'-2 1/4"	B	8'-3 3/4"
C	20'-8 3/4"	C	20'-8 3/4"
D	8'-3 3/4"	D	21'-11 1/2"
E	7'-3"	E	22'-2 1/4"
F	6'-5 3/4"	F	22'-2 1/4"
G	6'-5 3/4"	G	21'-11 1/2"
H	7'-3"	H	21'-11 1/2"
J	8'-3 3/4"	J	20'-8 3/4"
K	20'-8 3/4"	K	8'-3 3/4"
L	21'-11 1/2"	L	7'-3"
M	22'-2 1/4"	M	6'-6"
N	22'-2 1/4"	N	6'-6"
P	21'-11 1/2"	P	7'-3"
SL	16'-7 1/4"	SL	8'-6 1/2"
SR	16'-7 1/4"	SR	8'-6 1/2"
DL	5'-4 3/4"	DL	14'-3 1/2"
DR	5'-4 3/4"	DR	14'-3 1/2"



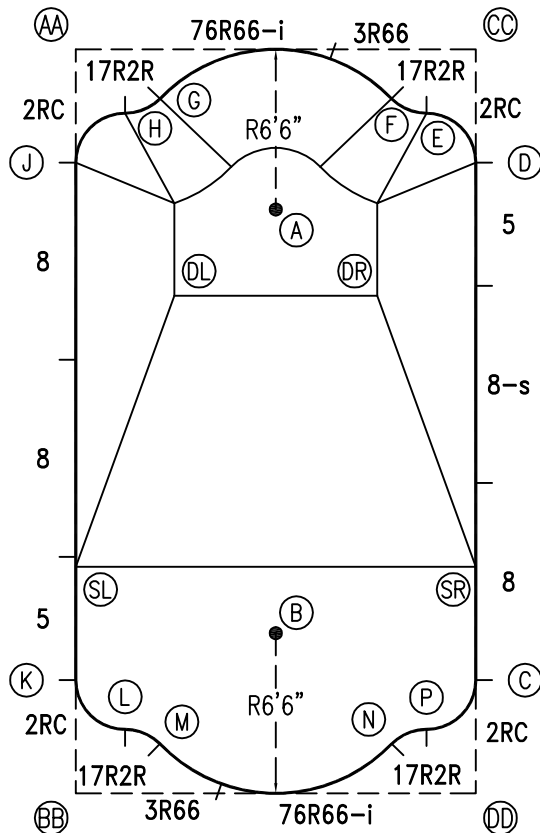
*ALL DIMENSIONS ARE FINISHED



NOTICE

SWIMMING POOLS AND ACCESSORIES (INCLUDING DIVING BOARDS) ARE DANGEROUS WHEN IMPROPERLY USED OR INSTALLED. IT IS THE RESPONSIBILITY OF MUNICIPAL OFFICIALS, BUILDERS AND POOL OWNERS TO ADHERE TO ALL SAFETY RECOMMENDATIONS AND STANDARDS ISSUED BY THE POOL & HOT TUB COUNCIL, LOCAL AUTHORITIES AND EQUIPMENT MANUFACTURERS. PLEASE REFER TO DIVING BOARD MANUFACTURERS FOR CORRECT POSITIONING AND INSTALLATION OF DIVING EQUIPMENT.

PERIMETER: 81'10"

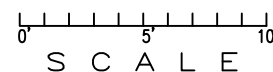


EXTERNAL INSTALLATION DATA

AA TO:	BB TO:	CC TO:	DD TO:
AA --	AA 30'-2 1/4"	AA 16'-2 3/4"	AA 34'-3 1/4"
BB --	BB --	BB 34'-3 1/4"	BB 16'-2 3/4"
CC --	CC --	CC --	CC 30'-2 1/4"
A 10'-4 3/4"	A 25'-0 1/2"	A 10'-4 3/4"	A 25'-0 1/2"
B 25'-0 1/2"	B 10'-4 3/4"	B 25'-0 1/2"	B 10'-4 3/4"
C 30'-3 1/2"	C 16'-10 1/4"	C 25'-7"	C 4'-7"
D 16'-10 1/4"	D 30'-3 1/2"	D 4'-7"	D 25'-7"
E 14'-5 1/2"	E 31'-0 1/2"	E 3'-3 1/4"	E 27'-7 3/4"
F 12'-11 1/2"	F 30'-11 1/2"	F 3'-11 1/2"	F 28'-4 1/2"
G 3'-11 1/2"	G 28'-4 1/2"	G 12'-11 1/2"	G 30'-11 1/2"
H 3'-3 1/4"	H 27'-7 3/4"	H 14'-5 1/2"	H 31'-0 1/2"
J 4'-7"	J 25'-7"	J 16'-10 1/4"	J 30'-3 1/2"
K 25'-7"	K 4'-7"	K 30'-3 1/2"	K 16'-10 1/4"
L 27'-7 3/4"	L 3'-3 1/4"	L 31'-0 1/2"	L 14'-5 1/2"
M 28'-4 1/2"	M 3'-11 1/2"	M 30'-11 1/2"	M 12'-11 1/2"
N 30'-11 1/2"	N 12'-11 1/2"	N 28'-4 1/2"	N 3'-11 1/2"
P 31'-0 1/2"	P 14'-5 1/2"	P 27'-7 3/4"	P 3'-3 1/4"
SL 21'-0"	SL 9'-2 1/4"	SL 26'-6 1/2"	SL 18'-7 3/4"
SR 26'-6 1/2"	SR 18'-7 3/4"	SR 21'-0"	SR 9'-2 1/4"
DL 10'-9 1/4"	DL 20'-6 3/4"	DL 15'-9 1/2"	DL 23'-7 1/4"
DR 15'-9 1/2"	DR 23'-7 1/4"	DR 10'-9 1/4"	DR 20'-6 3/4"

DIAGONALS

From Point "C" to:-	From Point "D" to:-
D 21'-0"	D
E 23'-1"	E 2'-9 7/8"
F 23'-9 7/8"	F 4'-3 3/8"
G 26'-10 1/8"	G 13'-0 7/8"
H 27'-0 1/2"	H 14'-4 3/8"
J 26'-6 1/2"	J 16'-2 3/4"
K 16'-2 3/4"	K 26'-6 1/2"
L 14'-4 3/8"	L 27'-0 1/2"
M 13'-0 7/8"	M 26'-10 1/8"
N 4'-3 3/8"	N 23'-9 7/8"
P 2'-9 7/8"	P 23'-1"



NOTICE

SWIMMING POOLS AND ACCESSORIES (INCLUDING DIVING BOARDS) ARE DANGEROUS WHEN IMPROPERLY USED OR INSTALLED. IT IS THE RESPONSIBILITY OF MUNICIPAL OFFICIALS, BUILDERS AND POOL OWNERS TO ADHERE TO ALL SAFETY RECOMMENDATIONS AND STANDARDS ISSUED BY THE POOL & HOT TUB COUNCIL, LOCAL AUTHORITIES AND EQUIPMENT MANUFACTURERS. PLEASE REFER TO DIVING BOARD MANUFACTURERS FOR CORRECT POSITIONING AND INSTALLATION OF DIVING EQUIPMENT.

HIGHBURY POOLS LTD

ROMAN - 16 x 30

DRAWING REFERENCE #
75-16-30-1

DRAWN BY: JK
REV. 2 AUG 13
SHEET 2 OF 2