

MISCELLANEOUS INFORMATION

PERIMETER:-	86'
SURFACE AREA:	473 SQ FT
VOLUME:	14987 IMP GALS 70324 L

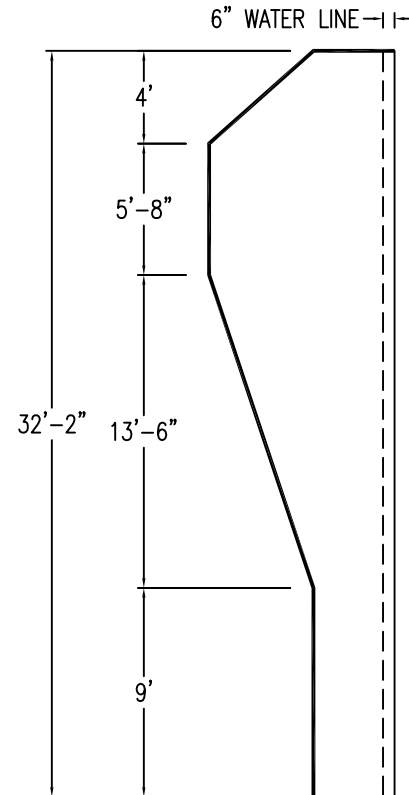
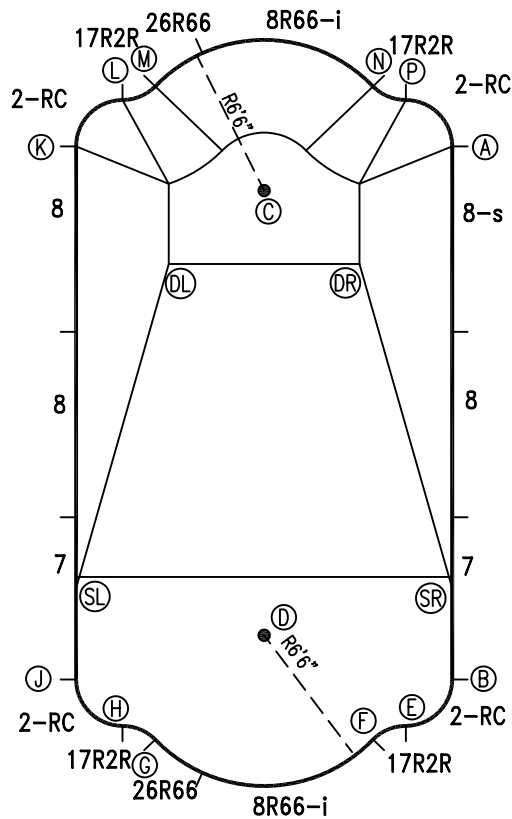
CONCRETE DECK INFO

WIDTH	AREA	NET INCREASES FOR:			
		STEPS	DIVING	SLIDE	ROLLER
2'	185	13	27	24	10
2'6"	234	17	31	20	10
3'	286	20	36	16	10

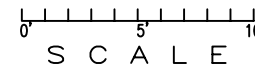
All Figures Represent "Sq Ft"

PARTS LIST

CODE	QTY	DESCRIPTION
8R66-i	2	8' Return x 6'6" Radius
26R66	2	2'6" Plain x 6'6" Rad
2RC	4	3'2" Plain x 2' Rad
17R2R	4	1'7" Plain x 2' Reverse Rad
8-s	1	8' Skimmer
8	3	8' Plain
7	2	7' Plain
AF	18	A-Frames
S	36	Stakes
NB	108	Nuts & Bolts



\*ALL DIMENSIONS ARE FINISHED



INSTALLATION DATA

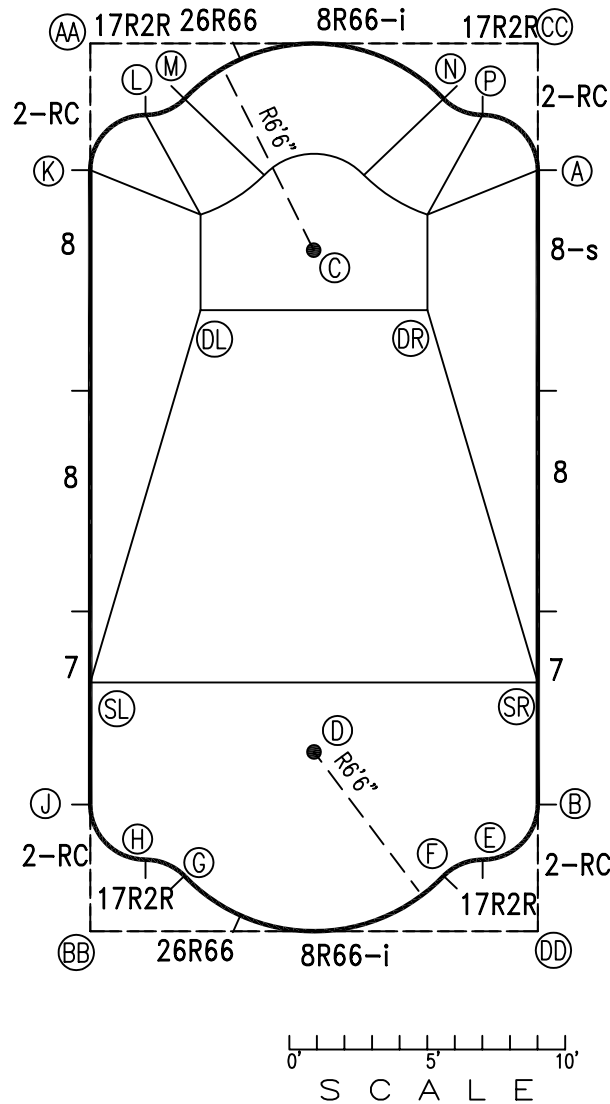
From Point "A" to:-		From Point "B" to:-	
B	23'-0"	B	21'-8"
C	8'-7 1/2"	C	8'-3 3/4"
D	22'-7 1/4"	D	2'-9 3/4"
E	25'-0 3/4"	E	4'-3 1/4"
F	25'-9 3/4"	F	13'-0 3/4"
G	28'-7 1/4"	G	14'-4 1/4"
H	28'-9"	H	16'-2 3/4"
J	28'-1 3/4"	J	28'-1 3/4"
K	16'-2 3/4"	K	28'-9"
L	14'-4 1/4"	L	28'-7 1/4"
M	13'-0 3/4"	M	25'-9 3/4"
N	4'-3 1/4"	N	25'-0 3/4"
P	2'-9 3/4"	P	16'-9 3/4"
SL	24'-7 3/4"	SL	4'-5"
SR	18'-6 3/4"	SR	21'-8 1/4"
DL	13'-2 3/4"	DL	18'-4 1/4"
DR	6'-5 1/2"	DR	

NOTICE

SWIMMING POOLS AND ACCESSORIES (INCLUDING DIVING BOARDS) ARE DANGEROUS WHEN IMPROPERLY USED OR INSTALLED. IT IS THE RESPONSIBILITY OF MUNICIPAL OFFICIALS, BUILDERS AND POOL OWNERS TO ADHERE TO ALL SAFETY RECOMMENDATIONS AND STANDARDS ISSUED BY THE POOL & HOT TUB COUNCIL, LOCAL AUTHORITIES AND EQUIPMENT MANUFACTURERS. PLEASE REFER TO DIVING BOARD MANUFACTURERS FOR CORRECT POSITIONING AND INSTALLATION OF DIVING EQUIPMENT.

EXTERNAL INSTALLATION DATA

AA TO:	BB TO:	CC TO:	DD TO:
AA ---	AA 32'-2 1/4"	AA 16'-2 3/4"	AA 36'-0 1/2"
BB ---	BB ---	BB 36'-0 1/2"	BB 16'-2 3/4"
CC ---	CC ---	CC ---	CC 32'-2 1/4"
A 16'-10 1/4"	A 32'-0"	A 4'-7"	A 27'-7"
B 32'-0"	B 16'-10 1/4"	B 27'-7"	B 4'-7"
C 11'-0 1/4"	C 25'-11 3/4"	C 11'-0 1/2"	C 26'-0"
D 26'-11 1/4"	D 10'-4 3/4"	D 26'-11 1/4"	D 10'-4 3/4"
E 32'-10"	E 14'-5 1/2"	E 29'-7 3/4"	E 3'-3 1/4"
F 32'-9 1/4"	F 12'-11 1/2"	F 30'-4 1/2"	F 3'-11 1/2"
G 30'-4 1/2"	G 3'-11 1/2"	G 32'-9 1/4"	G 12'-11 1/2"
H 29'-7 3/4"	H 3'-3 1/4"	H 32'-10"	H 14'-5 1/2"
J 27'-7"	J 4'-7"	J 32'-0"	J 16'-10 1/4"
K 4'-7"	K 27'-7"	K 16'-10 1/4"	K 32'-0"
L 3'-3 1/4"	L 29'-7 3/4"	L 14'-5 1/2"	L 32'-10"
M 3'-11 1/2"	M 30'-4 1/2"	M 12'-11 1/2"	M 32'-9 1/4"
N 12'-11 1/2"	N 32'-9 1/4"	N 3'-11 1/2"	N 30'-4 1/2"
P 14'-5 1/2"	P 32'-10"	P 3'-3 1/4"	P 29'-7 3/4"
SL 23'-1 3/4"	SL 9'-0 1/4"	SL 28'-3 1/4"	SL 18'-6 3/4"
SR 28'-3 1/4"	SR 18'-6 3/4"	SR 23'-1 3/4"	SR 9'-0 1/4"
DL 10'-5 1/2"	DL 22'-10 1/2"	DL 15'-7"	DL 25'-7 1/2"
DR 15'-7"	DR 25'-7 1/2"	DR 10'-5 1/2"	DR 22'-10 1/2"



NOTICE

SWIMMING POOLS AND ACCESSORIES (INCLUDING DIVING BOARDS) ARE DANGEROUS WHEN IMPROPERLY USED OR INSTALLED. IT IS THE RESPONSIBILITY OF MUNICIPAL OFFICIALS, BUILDERS AND POOL OWNERS TO ADHERE TO ALL SAFETY RECOMMENDATIONS AND STANDARDS ISSUED BY THE POOL & HOT TUB COUNCIL, LOCAL AUTHORITIES AND EQUIPMENT MANUFACTURERS. PLEASE REFER TO DIVING BOARD MANUFACTURERS FOR CORRECT POSITIONING AND INSTALLATION OF DIVING EQUIPMENT.

HIGHBURY POOLS LTD

ROMAN

16 x 32

DRAWING REFERENCE #  
75-16-32-1

DRAWN BY: JLG

REV. 11 DEC 2009

SHEET 2 OF 2