

**MISCELLANEOUS INFORMATION**

PERIMETER:	96'10"
SURFACE AREA:	592 SQ FT
VOLUME:	17605 IMP GALS 80103 LITER

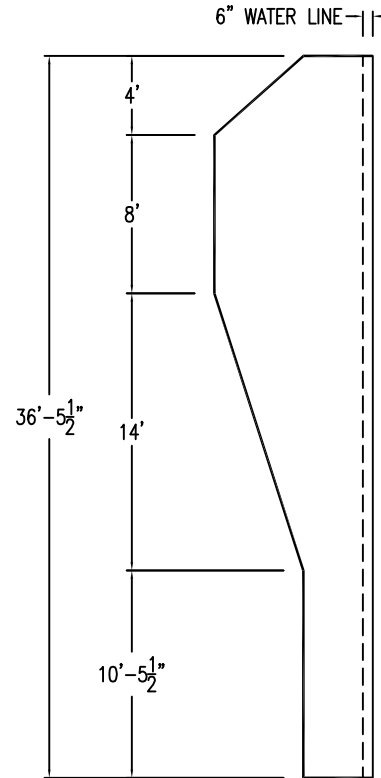
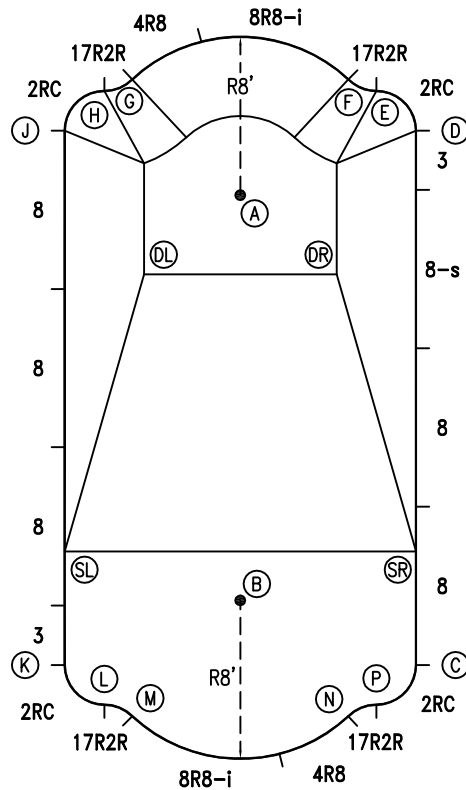
**CONCRETE DECK INFO**

WIDTH	AREA	NET INCREASES FOR:			
		STEPS	DIVING	SLIDE	ROLLER
2'	207	13	27	24	10
2'6"	0	17	31	20	10
3'	0	20	36	16	10

All Figures Represent "Sq Ft"

**PARTS LIST**

CODE	QTY	DESCRIPTION
2RC	4	3'2" Plain x 2' Rad Cnr
8	5	8' Plain
8-s	1	8' Skimmer
3	2	3' Plain
17R2R	4	1'7" Plain x 2' Reverse Radius
8R8-i	2	8' Return x 8' Radius
4R8	2	4' Plain x 8' Radius
AF	20	A-Frame
S	40	Stakes
NB	120	Nuts & Bolts

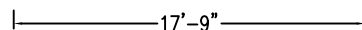


**INSTALLATION DATA**

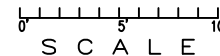
From Point "A" to:-		From Point "B" to:-	
B	20'-5 1/2"	B	9'-5 1/4"
C	25'-4"	C	9'-5 1/4"
D	9'-5 1/4"	D	25'-4"
E	8'-7 3/4"	E	26'-7 1/2"
F	8'-0"	F	26'-10 1/2"
G	8'-0"	G	26'-10 1/2"
H	8'-7 3/4"	H	26'-7 1/2"
J	9'-5 1/4"	J	25'-4"
K	25'-4"	K	9'-5 1/4"
L	26'-7 1/2"	L	8'-7 3/4"
M	26'-10 1/2"	M	8'-0"
N	26'-10 1/2"	N	8'-0"
P	26'-7 1/2"	P	8'-7 3/4"
SL	20'-0 3/4"	SL	9'-2 1/2"
SR	20'-0 3/4"	SR	9'-2 1/2"
DL	6'-3 1/2"	DL	17'-2"
DR	6'-3 1/2"	DR	17'-2"

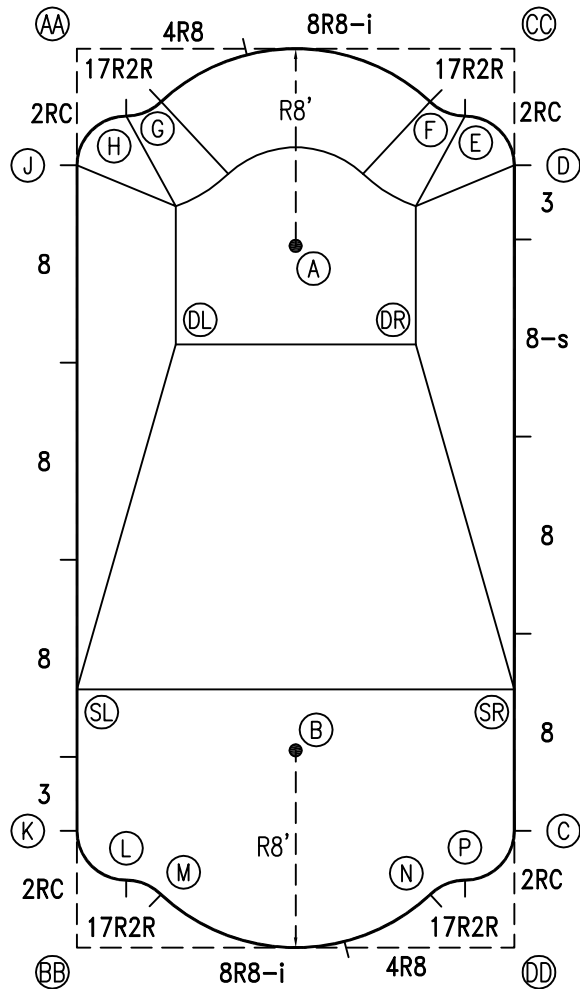
**NOTICE**

SWIMMING POOLS AND ACCESSORIES (INCLUDING DIVING BOARDS) ARE DANGEROUS WHEN IMPROPERLY USED OR INSTALLED. IT IS THE RESPONSIBILITY OF MUNICIPAL OFFICIALS, BUILDERS AND POOL OWNERS TO ADHERE TO ALL SAFETY RECOMMENDATIONS AND STANDARDS ISSUED BY THE POOL & HOT TUB COUNCIL, LOCAL AUTHORITIES AND EQUIPMENT MANUFACTURERS. PLEASE REFER TO DIVING BOARD MANUFACTURERS FOR CORRECT POSITIONING AND INSTALLATION OF DIVING EQUIPMENT.



\*ALL DIMENSIONS ARE FINISHED



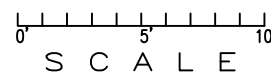


EXTERNAL INSTALLATION DATA

AA TO:	BB TO:	CC TO:	DD TO:
AA --	AA 36'-5 1/2"	AA 17'-8 3/4"	AA 40'-6 1/2"
BB --	BB --	BB 40'-6 1/2"	BB 17'-8 3/4"
CC --	CC --	CC --	CC 36'-5 1/2"
A 11'-11 1/4"	A 29'-9 3/4"	A 11'-11 1/4"	A 29'-9 3/4"
B 29'-9 3/4"	B 11'-11 1/4"	B 29'-9 3/4"	B 11'-11 1/4"
C 36'-4 1/4"	C 18'-4 1/4"	C 31'-8 3/4"	C 4'-8 3/4"
D 18'-4 1/4"	D 36'-4 1/4"	D 4'-8 3/4"	D 31'-8 3/4"
E 15'-11 3/4"	E 37'-2 3/4"	E 3'-4 1/2"	E 33'-9 1/2"
F 14'-5 3/4"	F 37'-2 1/4"	F 4'-0 1/4"	F 34'-5 3/4"
G 4'-0 1/4"	G 34'-5 3/4"	G 14'-5 3/4"	G 37'-2 1/4"
H 3'-4 1/2"	H 33'-9 1/2"	H 15'-11 3/4"	H 37'-2 3/4"
J 4'-8 3/4"	J 31'-8 3/4"	J 18'-4 1/4"	J 36'-4 1/4"
K 31'-8 3/4"	K 4'-8 3/4"	K 36'-4 1/4"	K 18'-4 1/4"
L 33'-9 1/2"	L 3'-4 1/2"	L 37'-2 3/4"	L 15'-11 3/4"
M 34'-5 3/4"	M 4'-0 1/4"	M 37'-2 1/4"	M 14'-5 3/4"
N 37'-2 1/4"	N 14'-5 3/4"	N 34'-5 3/4"	N 4'-0 1/4"
P 37'-2 3/4"	P 15'-11 3/4"	P 33'-9 1/2"	P 3'-4 1/2"
SL 26'-0"	SL 10'-5 1/2"	SL 31'-5 3/4"	SL 20'-7"
SR 31'-5 3/4"	SR 20'-7"	SR 26'-0"	SR 10'-5 1/2"
DL 12'-7 3/4"	DL 24'-9 1/2"	DL 18'-2 3/4"	DL 28'-0 3/4"
DR 18'-2 3/4"	DR 28'-0 3/4"	DR 12'-7 3/4"	DR 24'-9 1/2"

DIAGONALS

From Point "C" to:-		From Point "D" to:-	
D	27'-0"	D	
E	29'-0 7/8"	E	2'-9 7/8"
F	29'-9 3/8"	F	4'-3 3/8"
G	32'-10 1/2"	G	14'-6 5/8"
H	33'-0"	H	15'-10 3/8"
J	32'-3 5/8"	J	17'-8 7/8"
K	17'-8 7/8"	K	32'-3 5/8"
L	15'-10 3/8"	L	33'-0"
M	14'-6 5/8"	M	32'-10 1/2"
N	4'-3 3/8"	N	29'-9 3/8"
P	2'-9 7/8"	P	29'-0 7/8"



NOTICE

SWIMMING POOLS AND ACCESSORIES (INCLUDING DIVING BOARDS) ARE DANGEROUS WHEN IMPROPERLY USED OR INSTALLED. IT IS THE RESPONSIBILITY OF MUNICIPAL OFFICIALS, BUILDERS AND POOL OWNERS TO ADHERE TO ALL SAFETY RECOMMENDATIONS AND STANDARDS ISSUED BY THE POOL & HOT TUB COUNCIL, LOCAL AUTHORITIES AND EQUIPMENT MANUFACTURERS. PLEASE REFER TO DIVING BOARD MANUFACTURERS FOR CORRECT POSITIONING AND INSTALLATION OF DIVING EQUIPMENT.