

MISCELLANEOUS INFORMATION

PERIMETER:	52'
SURFACE AREA:	166 SQ FT
VOLUME:	3736 IMP GALS 16999 LITER

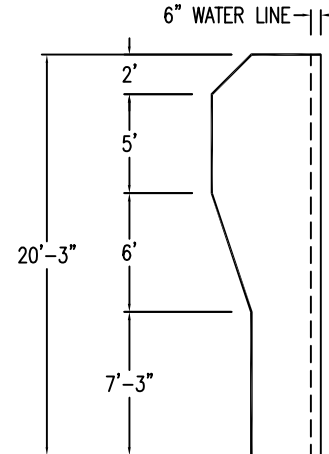
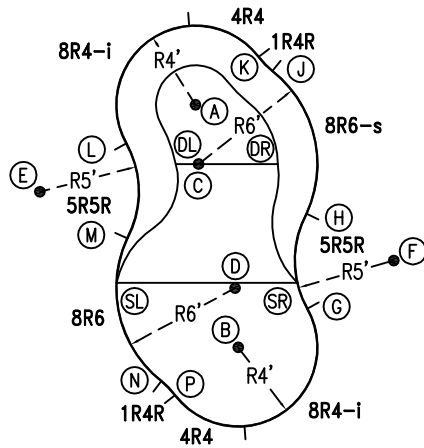
CONCRETE DECK INFO

WIDTH	AREA	NET INCREASES FOR:			
		STEPS	DIVING	SLIDE	ROLLER
2'	116	13	27	24	10
2'6"	149	17	31	20	10
3'	184	20	36	16	10

All Figures Represent "Sq Ft"

PARTS LIST

CODE	QTY	DESCRIPTION
8R6	1	8' Plain x 6' Radius
5R5R	2	5' Plain x 5' Reverse Radius
8R4-i	2	8' Return x 4' Radius
4R4	2	4' Plain x 4' Radius
1R4R	2	1' Plain x 4' Reverse Radius
8R6-s	1	8' Skimmer x 6' Radius
AF	10	A-Frame
S	20	Stakes
NB	60	Nuts & Bolts



INSTALLATION DATA

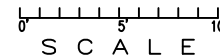
From Point "A" to:-		From Point "B" to:-	
B	12'-5 1/4"	B	9'-5 1/2"
C	3'-0"	C	3'-0"
D	9'-5 1/2"	D	12'-8 3/4"
E	9'-0"	E	9'-0"
F	12'-8 3/4"	F	4'-0"
G	11'-8 3/4"	G	7'-6 3/4"
H	7'-10 1/4"	H	14'-0 3/4"
J	4'-2 3/4"	J	14'-8 1/2"
K	4'-0"	K	11'-8 3/4"
L	4'-0"	L	7'-10 1/4"
M	7'-6 3/4"	M	4'-2 3/4"
N	14'-0 3/4"	N	4'-0"
P	14'-8 1/2"	P	6'-11 1/2"
SL	9'-10"	SL	4'-4 3/4"
SR	10'-4 1/4"	SR	9'-9 1/4"
DL	3'-1 3/4"	DL	9'-5 1/2"
DR	5'-1 1/2"	DR	

NOTICE

SWIMMING POOLS AND ACCESSORIES (INCLUDING DIVING BOARDS) ARE DANGEROUS WHEN IMPROPERLY USED OR INSTALLED. IT IS THE RESPONSIBILITY OF MUNICIPAL OFFICIALS, BUILDERS AND POOL OWNERS TO ADHERE TO ALL SAFETY RECOMMENDATIONS AND STANDARDS ISSUED BY THE POOL & HOT TUB COUNCIL, LOCAL AUTHORITIES AND EQUIPMENT MANUFACTURERS. PLEASE REFER TO DIVING BOARD MANUFACTURERS FOR CORRECT POSITIONING AND INSTALLATION OF DIVING EQUIPMENT.

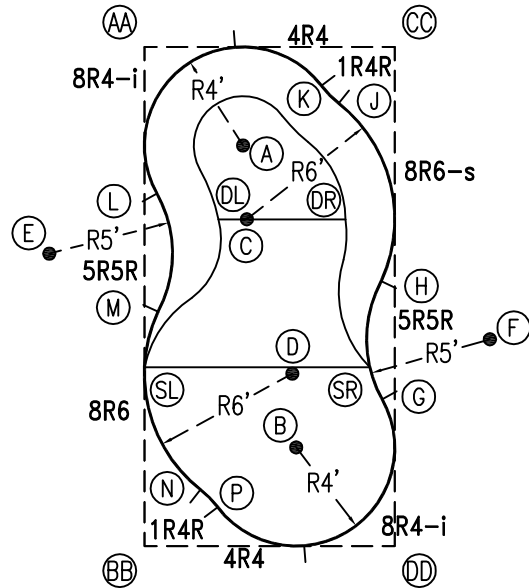
10'-2"

*ALL DIMENSIONS ARE FINISHED



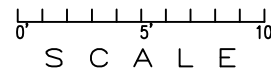
EXTERNAL INSTALLATION DATA

AA TO:	BB TO:	CC TO:	DD TO:
AA ---	AA 20'-3"	AA 10'-1 3/4"	AA 22'-7 3/4"
BB ---	BB ---	BB 22'-7 3/4"	BB 10'-1 3/4"
CC ---	CC ---	CC ---	CC 20'-3"
A 5'-7 3/4"	A 16'-8 3/4"	A 7'-4"	A 17'-4 1/2"
B 17'-4 1/2"	B 7'-4"	B 16'-8 3/4"	B 5'-7 3/4"
C 8'-1 1/2"	C 13'-10 3/4"	C 9'-2 1/2"	C 14'-6 1/2"
D 14'-6 1/2"	D 9'-2 1/2"	D 13'-10 3/4"	D 8'-1 1/2"
E 9'-2 3/4"	E 12'-5 1/2"	E 16'-3 3/4"	E 18'-4 1/4"
F 18'-4 1/4"	F 16'-3 3/4"	F 12'-5 1/2"	F 9'-2 3/4"
G 17'-3"	G 11'-4"	G 14'-3 3/4"	G 5'-11 1/2"
H 13'-6"	H 14'-4 3/4"	H 9'-6 1/4"	H 10'-9"
J 8'-2 1/2"	J 19'-7 1/4"	J 3'-2 3/4"	J 18'-1 1/4"
K 7'-4 1/4"	K 20'-0"	K 3'-4 1/4"	K 18'-10 3/4"
L 5'-11 1/2"	L 14'-3 3/4"	L 11'-4"	L 17'-3"
M 10'-9"	M 9'-6 1/4"	M 14'-4 3/4"	M 13'-6"
N 18'-1 1/4"	N 3'-2 3/4"	N 19'-7 1/4"	N 8'-2 1/2"
P 18'-10 3/4"	P 3'-4 1/4"	P 20'-0"	P 7'-4 1/4"
SL 13'-0"	SL 7'-3"	SL 16'-5 3/4"	SL 12'-5 1/2"
SR 15'-10 3/4"	SR 11'-8"	SR 13'-0 1/2"	SR 7'-3 3/4"
DL 7'-7 1/4"	DL 13'-7"	DL 10'-0"	DL 15'-0 3/4"
DR 10'-8 3/4"	DR 15'-6 3/4"	DR 7'-3 1/4"	DR 13'-4 3/4"



DIAGONALS

From Point "G" to:-	From Point "H" to:-
H 4'-9 1/2"	H 7'-5"
J 12'-1 3/4"	J 8'-3 1/2"
K 12'-11 1/2"	L 9'-9 1/4"
L 12'-4 5/8"	M 9'-1 5/8"
M 9'-9 1/4"	N 11'-2 1/4"
N 8'-2 3/4"	P 11'-3 3/4"
P 7'-11 3/4"	



NOTICE

SWIMMING POOLS AND ACCESSORIES (INCLUDING DIVING BOARDS) ARE DANGEROUS WHEN IMPROPERLY USED OR INSTALLED. IT IS THE RESPONSIBILITY OF MUNICIPAL OFFICIALS, BUILDERS AND POOL OWNERS TO ADHERE TO ALL SAFETY RECOMMENDATIONS AND STANDARDS ISSUED BY THE POOL & HOT TUB COUNCIL, LOCAL AUTHORITIES AND EQUIPMENT MANUFACTURERS. PLEASE REFER TO DIVING BOARD MANUFACTURERS FOR CORRECT POSITIONING AND INSTALLATION OF DIVING EQUIPMENT.