

MISCELLANEOUS INFORMATION

PERIMETER:-	92'-0"
SURFACE AREA:	481 SQ FT
VOLUME:	13646 IMP GALS 62089 L

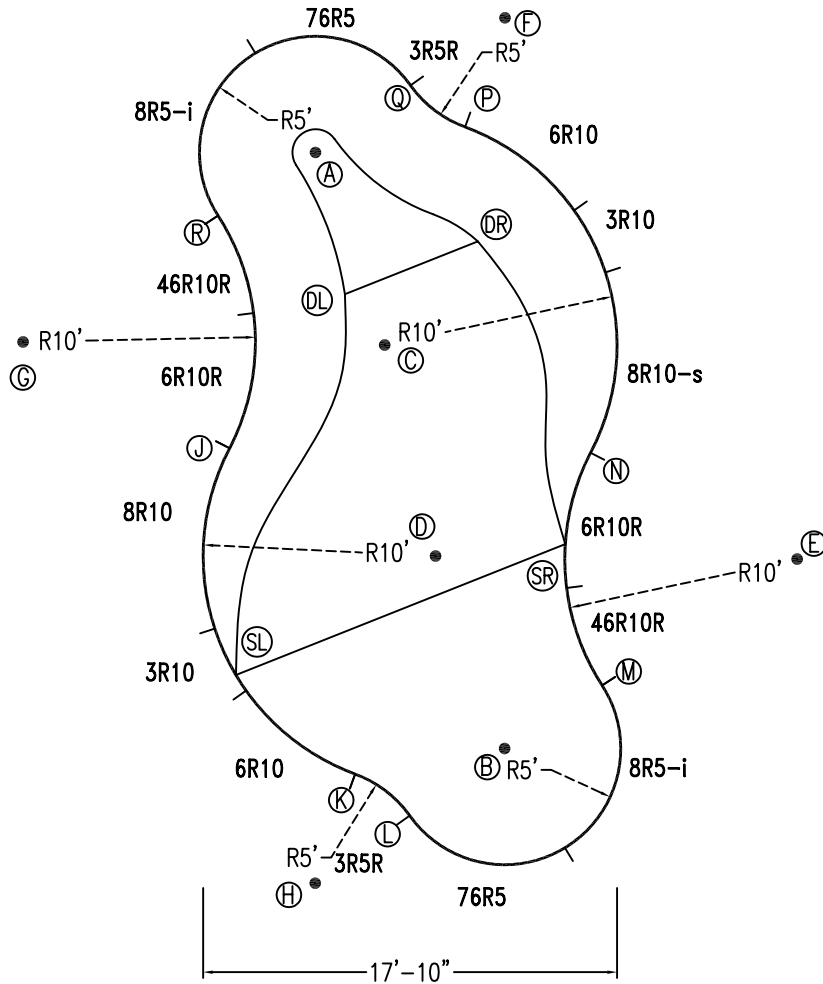
CONCRETE DECK INFO

WIDTH	AREA	NET INCREASES FOR:			
		STEPS	DIVING	SLIDE	ROLLER
2"	172	13	27	24	10
2'6"	219	17	31	20	10
3"	267	20	36	16	10

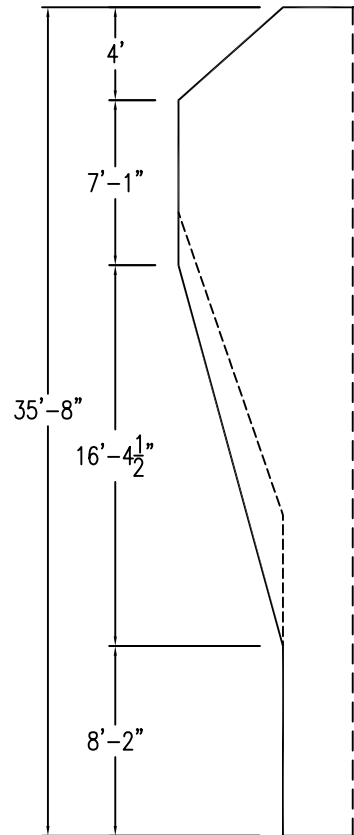
All Figures Represent "Sq Ft"

PARTS LIST

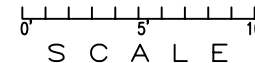
CODE	QTY	DESCRIPTION
8R10-s	1	8' Skimmer x 10' Radius
8R10	1	8' Plain x 10' Radius
6R10	2	6' Plain x 10' Reverse Rad
3R10	2	3' Plain x 10' Rad
8R5-i	2	8' Return x 5' Radius
76R5	2	7'6 Return x 5' Rad
6R10R	2	6' Plain x 10' Reverse Rad
46R10R	2	4'6 Plain x 10' Reverse Rad
3R5R	2	3' Plain x 5' Reverse Rad
AF	16	A-Frame
S	32	Stake
NB	96	Nuts & Bolts



6" WATER LINE - I I -



*ALL DIMENSIONS ARE FINISHED



INSTALLATION DATA

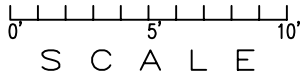
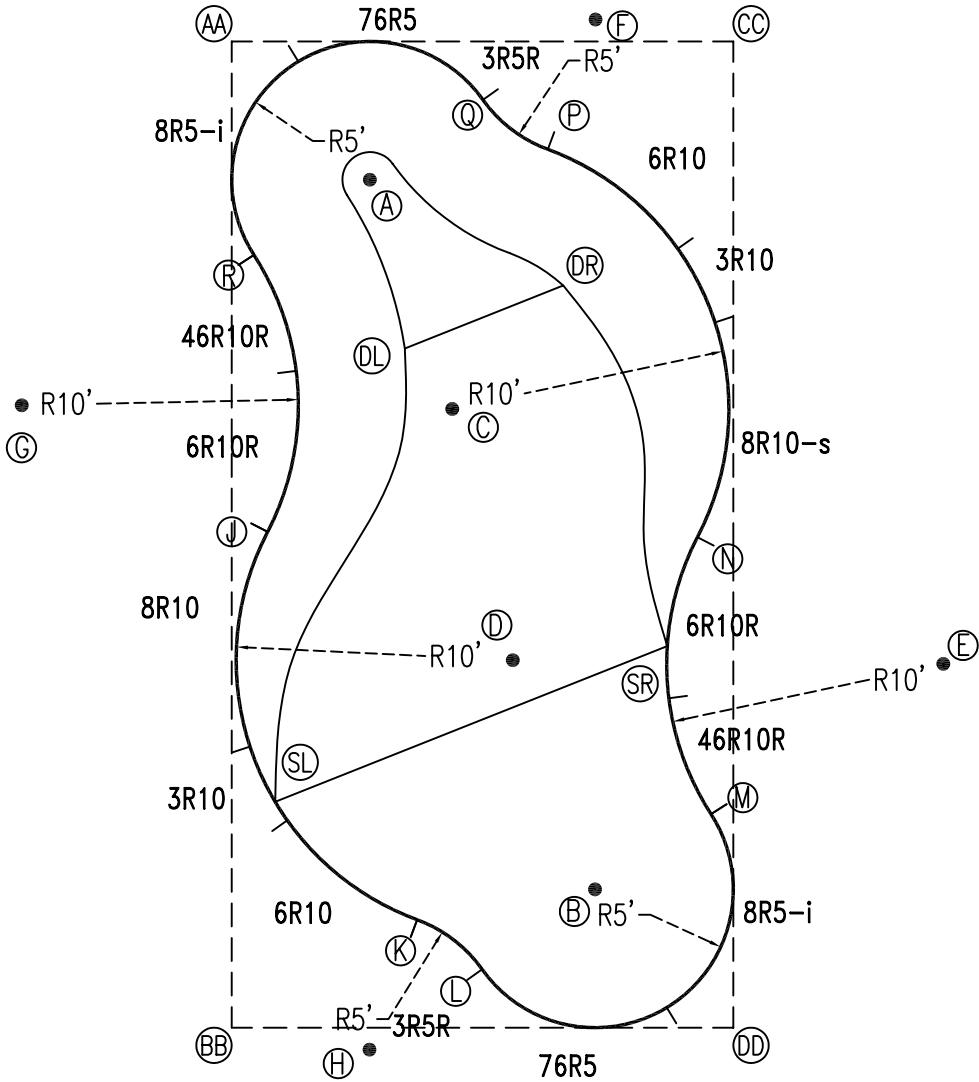
From Point "A" to:-		From Point "B" to:-	
B	26'-10 7/8"	B	18'-1 3/8"
C	8'-9 5/8"	C	18'-9 5/8"
D	18'-1 1/2"	D	8'-9 5/8"
E	27'-1 1/2"	E	15'-0"
F	10'-0"	F	31'-5 3/8"
G	15'-0"	G	27'-1 1/2"
H	31'-5 3/8"	H	10'-0"
J	13'-3 1/8"	J	17'-6 1/4"
K	26'-9 5/8"	K	6'-6 1/4"
L	28'-9 7/8"	L	5'-0"
M	26'-0 1/2"	M	5'-0"
N	17'-6 3/8"	N	13'-3 1/8"
P	6'-6 3/8"	P	26'-9 5/8"
Q	5'-0"	Q	28'-9 7/8"
R	5'-0"	R	26'-0 1/2"
SL	22'-8 7/8"	SL	11'-11 7/8"
SR	19'-11 7/8"	SR	9'-2 1/8"
DL	6'-2 3/4"	DL	20'-8 3/4"
DR	7'-11 5/8"	DR	21'-10 1/4"

NOTICE

SWIMMING POOLS AND ACCESSORIES (INCLUDING DIVING BOARDS) ARE DANGEROUS WHEN IMPROPERLY USED OR INSTALLED. IT IS THE RESPONSIBILITY OF MUNICIPAL OFFICIALS, BUILDERS AND POOL OWNERS TO ADHERE TO ALL SAFETY RECOMMENDATIONS AND STANDARDS ISSUED BY THE POOL & HOT TUB COUNCIL, LOCAL AUTHORITIES AND EQUIPMENT MANUFACTURERS. PLEASE REFER TO DIVING BOARD MANUFACTURERS FOR CORRECT POSITIONING AND INSTALLATION OF DIVING EQUIPMENT.

EXTERNAL INSTALLATION DATA

AA TO:	BB TO:	CC TO:	DD TO:
AA ---	AA 35'-7 7/8"	AA 18'-1 5/8"	AA 40'-0"
BB ---	BB ---	BB 40'-0"	BB 18'-1 5/8"
CC ---	CC ---	CC ---	CC 35'-7 7/8"
A 7'-0 7/8"	A 31'-0 3/4"	A 14'-0 5/8"	A 33'-4 1/8"
B 33'-4 1/8"	B 14'-0 5/8"	B 31'-0 3/4"	B 7'-0 7/8"
C 15'-5 7/8"	C 23'-8 7/8"	C 16'-8 3/4"	C 24'-6 3/4"
D 24'-6 3/4"	D 16'-8 3/4"	D 23'-8 7/8"	D 15'-5 7/8"
E 34'-2 1/8"	E 28'-10 3/4"	E 23'-8 7/8"	E 15'-2 1/4"
F 13'-2 1/8"	F 38'-8 7/8"	F 5'-0 1/2"	F 36'-9 3/8"
G 15'-2 1/4"	G 23'-8 7/8"	G 28'-10 3/4"	G 34'-2 1/8"
H 36'-9 3/8"	H 5'-0 1/2"	H 38'-8 7/8"	H 13'-2 1/8"
J 17'-9 3/8"	J 17'-11 5/8"	J 24'-5 3/8"	J 24'-7"
K 32'-5 3/8"	K 7'-9"	K 33'-8 7/8"	K 12'-0 7/8"
L 34'-8 7/8"	L 9'-3 1/2"	L 34'-8 7/8"	L 9'-3 7/8"
M 32'-10 1/2"	M 18'-11 5/8"	M 27'-11 3/8"	M 7'-9 1/8"
N 24'-7"	N 24'-5 3/8"	N 17'-11 5/8"	N 17'-9 3/8"
P 12'-0 7/8"	P 33'-8 7/8"	P 7'-9"	P 32'-5 3/8"
Q 9'-3 7/8"	Q 34'-8 7/8"	Q 9'-3 1/2"	Q 34'-8 7/8"
R 7'-9 1/8"	R 27'-11 3/8"	R 18'-11 5/8"	R 32'-10 1/2"
SR 27'-6 3/8"	SR 8'-3 3/4"	SR 32'-1 1/8"	SR 18'-5 5/8"
SL 26'-11 1/4"	SL 20'-11 1/4"	SL 21'-11 7/8"	SL 14'-0"
DR 12'-8 7/8"	DR 25'-4"	DR 16'-3"	DR 27'-3 1/4"
DL 14'-10 5/8"	DL 29'-4 5/8"	DL 10'-9"	DL 27'-6 1/4"



NOTICE

SWIMMING POOLS AND ACCESSORIES (INCLUDING DIVING BOARDS) ARE DANGEROUS WHEN IMPROPERLY USED OR INSTALLED. IT IS THE RESPONSIBILITY OF MUNICIPAL OFFICIALS, BUILDERS AND POOL OWNERS TO ADHERE TO ALL SAFETY RECOMMENDATIONS AND STANDARDS ISSUED BY THE POOL & HOT TUB COUNCIL, LOCAL AUTHORITIES AND EQUIPMENT MANUFACTURERS. PLEASE REFER TO DIVING BOARD MANUFACTURERS FOR CORRECT POSITIONING AND INSTALLATION OF DIVING EQUIPMENT.

HIGHBURY POOLS LTD

SEDONA - RIGHT 18 x 36

DRAWING REFERENCE #
80-18-36-2

DRAWN BY: GB
REV. 12 FEB 2008
SHEET 2 OF 2