

MISCELLANEOUS INFORMATION

PERIMETER:-	103'
SURFACE AREA:	614.2 SQ FT
VOLUME:	17745 IMP GALS 80737 L

CONCRETE DECK INFO

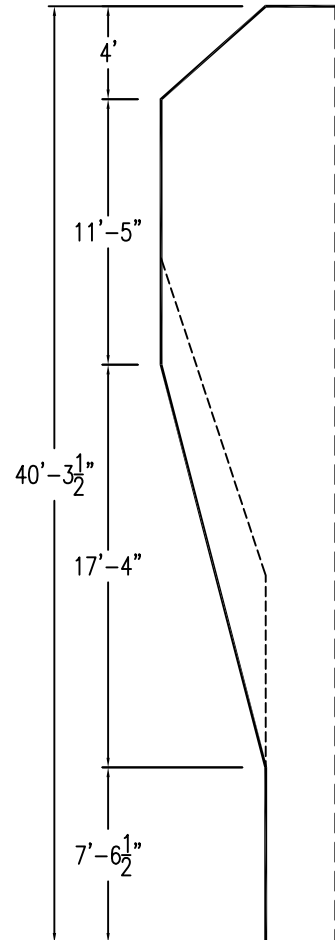
WIDTH	AREA	NET INCREASES FOR:			
		STEPS	DIVING	SLIDE	ROLLER
2"	219	13	27	24	10
2'6"	277	17	31	20	10
3'	337	20	36	16	10

All Figures Represent "Sq Ft"

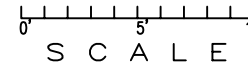
PARTS LIST

CODE	QTY	DESCRIPTION
6R10R	2	6' Plain x 10' Reverse Rad
46R10R	2	4'6" Plain x 10' Reverse Rad
6R6	2	6' Plain x 6' Rad
8R6-i	2	8' Return x 6' Rad
5R6	2	5' Plain x 6' Rad
3R5R	2	3' Plain x 5' Reverse Rad
8R12-s	1	8' Skimmer x 12' Rad
8R12	1	8' Plain x 12' Rad
5R12	2	5' Plain x 12' Rad
6R12	2	6' Plain x 12' Rad
AF	18	A-Frame
S	36	Stake
NB	108	Nuts & Bolts

6" WATER LINE - 11-



*ALL DIMENSIONS ARE FINISHED



INSTALLATION DATA

From Point "A" to:-		From Point "B" to:-	
B	29'-5 1/4"	B	
C	9'-11 5/8"	C	19'-5 7/8"
D	19'-5 7/8"	D	9'-11 5/8"
E	29'-4 1/2"	E	16'-0"
F	11'-0"	F	33'-10 7/8"
G	16'-0"	G	29'-4 1/2"
H	33'-10 7/8"	H	11'-0"
J	14'-0 3/8"	J	19'-10 1/8"
K	29'-4 3/8"	K	7'-5 1/8"
L	31'-5 3/4"	L	6'-0"
M	28'-4 1/2"	M	6'-0"
N	19'-10 1/8"	N	14'-0 3/8"
P	7'-5 1/8"	P	29'-4 3/8"
Q	6'-0"	Q	31'-5 3/4"
R	6'-0"	R	28'-4 1/2"
SR	26'-10 7/8"	SR	11'-0"
SL	21'-11"	SL	10'-5 5/8"
DR	9'-5 1/4"	DR	20'-4 5/8"
DL	9'-8 7/8"	DL	23'-5 1/2"

NOTICE

SWIMMING POOLS AND ACCESSORIES (INCLUDING DIVING BOARDS) ARE DANGEROUS WHEN IMPROPERLY USED OR INSTALLED. IT IS THE RESPONSIBILITY OF MUNICIPAL OFFICIALS, BUILDERS AND POOL OWNERS TO ADHERE TO ALL SAFETY RECOMMENDATIONS AND STANDARDS ISSUED BY THE POOL & HOT TUB COUNCIL, LOCAL AUTHORITIES AND EQUIPMENT MANUFACTURERS. PLEASE REFER TO DIVING BOARD MANUFACTURERS FOR CORRECT POSITIONING AND INSTALLATION OF DIVING EQUIPMENT.

DRAWING REFERENCE #
80-20-40-1

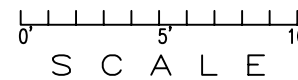
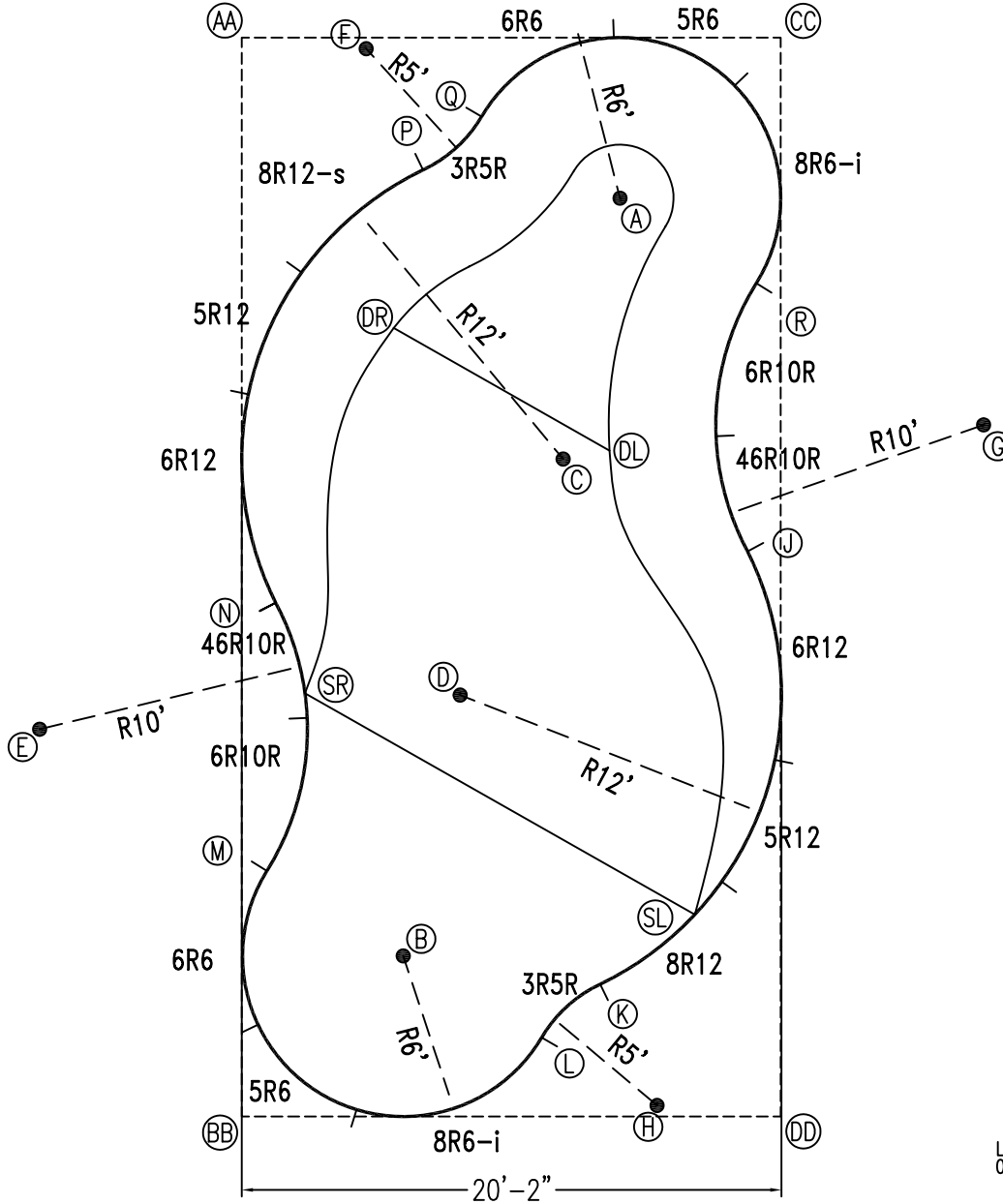
DRAWN BY: BC
REV. 16 FEB 2007
SHEET 1 OF 2

HIGHBURY POOLS LTD

SEDONA - LEFT 20 x 40

EXTERNAL INSTALLATION DATA

AA TO:	BB TO:	CC TO:	DD TO:
AA ---	AA 40'-3 5/8"	AA 20'-1 1/2"	AA 45'-0 5/8"
BB ---	BB ---	BB 45'-0 5/8"	BB 20'-1 1/2"
CC ---	CC ---	CC ---	CC 40'-3 5/8"
A 15'-4 1/8"	A 37'-1 1/8"	A 8'-5 7/8"	A 34'-9 7/8"
B 34'-9 7/8"	B 8'-6 1/8"	B 37'-1"	B 15'-3 7/8"
C 19'-9 1/2"	C 27'-4"	C 17'-8 5/8"	C 25'-10 3/8"
D 25'-10 1/2"	D 17'-8 3/4"	D 27'-3 7/8"	D 19'-9 3/8"
E 26'-10 7/8"	E 16'-3 3/4"	E 37'-10 1/4"	E 31'-2 5/8"
F 4'-7 7/8"	F 40'-1 7/8"	F 15'-5 3/4"	F 42'-9 3/8"
G 31'-3"	G 37'-10 1/2"	G 16'-3 7/8"	G 26'-11 1/8"
H 42'-9 1/2"	H 15'-6 1/8"	H 40'-1 7/8"	H 4'-7 5/8"
J 26'-11 1/8"	J 28'-3 7/8"	J 19'-2 3/4"	J 21'-1 3/4"
K 37'-9 3/4"	K 14'-3 1/4"	K 36'-0"	K 8'-4 1/4"
L 38'-11 7/8"	L 11'-6 7/8"	L 38'-4 3/4"	L 9'-4 3/4"
M 31'-1 3/4"	M 9'-2 5/8"	M 36'-6 3/4"	M 21'-3 1/4"
N 21'-1 3/4"	N 19'-2 7/8"	N 28'-3 5/8"	N 26'-10 7/8"
P 8'-4 5/8"	P 36'-0"	P 14'-2 7/8"	P 37'-9 5/8"
Q 9'-5 1/8"	Q 38'-4 7/8"	Q 11'-6 5/8"	Q 38'-11 3/4"
R 21'-3 1/2"	R 36'-6 7/8"	R 9'-2 5/8"	R 31'-1 3/4"
SR 36'-10 3/8"	SR 18'-6 1/4"	SR 32'-10 7/8"	SR 8'-2 3/8"
SL 24'-7 1/4"	SL 15'-11 3/4"	SL 30'-3 1/8"	SL 23'-9 3/8"
DR 20'-7 7/8"	DR 28'-4 7/8"	DR 16'-8 3/8"	DR 25'-8 1/4"
DL 12'-2 7/8"	DL 30'-0"	DL 18'-0 7/8"	DL 32'-9 3/4"



NOTICE

SWIMMING POOLS AND ACCESSORIES (INCLUDING DIVING BOARDS) ARE DANGEROUS WHEN IMPROPERLY USED OR INSTALLED. IT IS THE RESPONSIBILITY OF MUNICIPAL OFFICIALS, BUILDERS AND POOL OWNERS TO ADHERE TO ALL SAFETY RECOMMENDATIONS AND STANDARDS ISSUED BY THE POOL & HOT TUB COUNCIL, LOCAL AUTHORITIES AND EQUIPMENT MANUFACTURERS. PLEASE REFER TO DIVING BOARD MANUFACTURERS FOR CORRECT POSITIONING AND INSTALLATION OF DIVING EQUIPMENT.

HIGHBURY POOLS LTD

SEDONA - LEFT 20 x 40

DRAWING REFERENCE #
80-20-40-1

DRAWN BY: BC
REV. 16 FEB 2007
SHEET 2 OF 2