

MISCELLANEOUS INFORMATION

PERIMETER:	64'1"
SURFACE AREA:	244 SQ FT
VOLUME:	6167 IMP GALS 28060 LITER

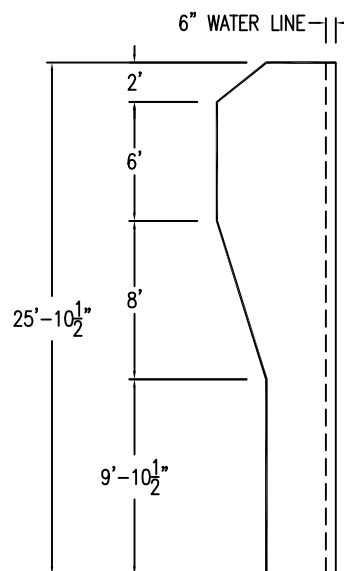
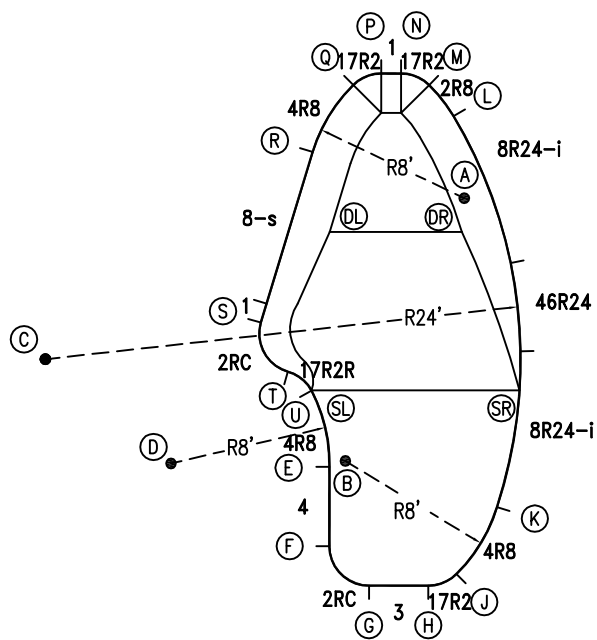
CONCRETE DECK INFO

WIDTH	AREA	NET INCREASES FOR:			
		STEPS	DIVING	SLIDE	ROLLER
2'	140	13	27	24	10
2'6"	179	17	31	20	10
3'	220	20	36	16	10

All Figures Represent "Sq Ft"

PARTS LIST

CODE	QTY	DESCRIPTION
4R8	3	4' Plain x 8' Radius
4	1	4' Plain
2RC	2	3'2" Plain x 2' Rad Cnr
3	1	3' Plain
17R2	3	1'7" Plain x 2' Radius
8R24-i	2	8' Return x 24' Radius
46R24	1	4'6" Plain x 24' Radius
2R8	1	2' Plain x 8' Radius
1	2	1' Plain
8-s	1	8' Skimmer
17R2R	1	1'7" Plain x 2' Reverse Radius
AF	18	A-Frame
S	36	Stakes
NB	108	Nuts & Bolts

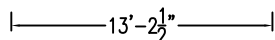


INSTALLATION DATA

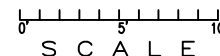
From Point "A" to:-		From Point "B" to:-	
B	14'-6 3/4"	B	16'-0"
C	22'-8"	C	16'-0"
D	19'-11 3/4"	D	8'-9 3/4"
E	15'-2 1/4"	E	0'-10 1/4"
F	18'-10 1/4"	F	4'-4 1/2"
G	20'-1 3/4"	G	6'-4 3/4"
H	19'-7 3/4"	H	7'-6 3/4"
J	19'-0"	J	8'-0"
K	15'-8 1/4"	K	8'-0"
L	4'-2"	L	18'-3 1/4"
M	5'-11 3/4"	M	19'-5 1/2"
N	7'-0 3/4"	N	19'-9 1/4"
P	7'-6 3/4"	P	19'-7 3/4"
Q	8'-0"	Q	19'-0"
R	8'-0"	R	15'-8 1/4"
S	12'-0 1/2"	S	8'-2 1/4"
T	12'-5 3/4"	T	5'-4 1/4"
U	12'-4 3/4"	U	3'-11 1/4"
SL	12'-4 3/4"	SL	3'-11 1/2"
SR	10'-1"	SR	9'-5 3/4"
DL	7'-0"	DL	11'-7 1/4"
DR	1'-8 1/2"	DR	12'-11 3/4"

NOTICE

SWIMMING POOLS AND ACCESSORIES (INCLUDING DIVING BOARDS) ARE DANGEROUS WHEN IMPROPERLY USED OR INSTALLED. IT IS THE RESPONSIBILITY OF MUNICIPAL OFFICIALS, BUILDERS AND POOL OWNERS TO ADHERE TO ALL SAFETY RECOMMENDATIONS AND STANDARDS ISSUED BY THE POOL & HOT TUB COUNCIL, LOCAL AUTHORITIES AND EQUIPMENT MANUFACTURERS. PLEASE REFER TO DIVING BOARD MANUFACTURERS FOR CORRECT POSITIONING AND INSTALLATION OF DIVING EQUIPMENT.



\*ALL DIMENSIONS ARE FINISHED



HIGHBURY POOLS LTD

WASAGA - LEFT 13 x 13 x 26

DRAWING REFERENCE #  
94-13-26-1

DRAWN BY: JK  
REV. 28 AUG 13  
SHEET 1 OF 2

