

MISCELLANEOUS INFORMATION

PERIMETER:	68'
SURFACE AREA:	266 SQ FT
VOLUME:	7027 IMP GALS 31973 LITER

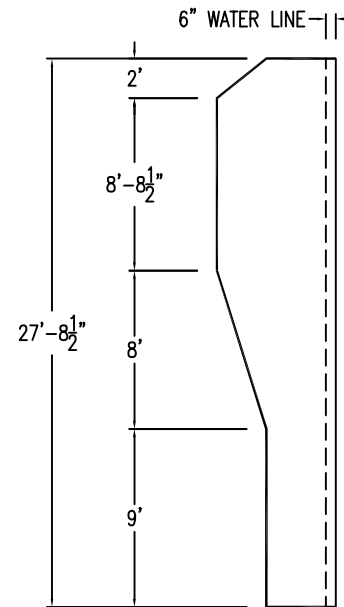
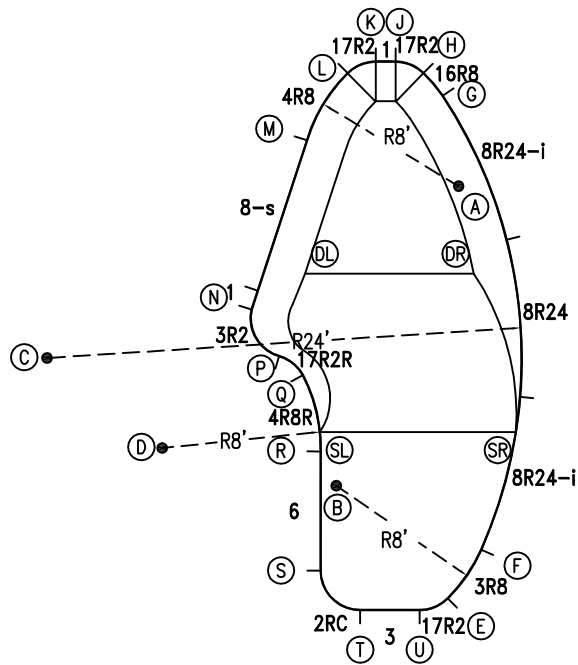
CONCRETE DECK INFO

WIDTH	AREA	NET INCREASES FOR:			
		STEPS	DIVING	SLIDE	ROLLER
2'	148	13	27	24	10
2'6"	0	17	31	20	10
3'	0	20	36	16	10

All Figures Represent "Sq Ft"

PARTS LIST

CODE	QTY	DESCRIPTION
17R2	3	1'7" Plain x 2' Radius
3R8	1	3' Plain x 8' Radius
8R24-i	2	8' Return x 24' Radius
8R24	1	8' Plain x 24' Radius
16R8	1	1'6" Plain x 8' Radius
1	2	1' Plain
4R8	1	4' Plain x 8' Radius
8-s	1	8' Skimmer
3R2	1	3' Plain x 2' Radius
17R2R	1	1'7" Plain x 2' Reverse Radius
4R8R	1	4' Plain x 8' Reverse Radius
6	1	6' Plain
2RC	1	3'2" Plain x 2' Rad Cnr
3	1	3' Plain
AF	18	A-Frame
S	36	Stakes
NB	108	Nuts & Bolts

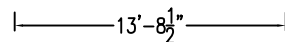


INSTALLATION DATA

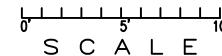
From Point "A" to:-		From Point "B" to:-	
B	16'-4"	B	15'-11 1/2"
C	22'-6 1/4"	C	9'-0"
D	19'-11 3/4"	D	8'-0"
E	20'-9 3/4"	E	8'-0"
F	18'-4 3/4"	F	20'-5"
G	4'-7 1/2"	G	20'-5"
H	5'-11 3/4"	H	21'-3 1/2"
J	7'-0 3/4"	J	21'-7 1/2"
K	7'-6 3/4"	K	21'-6 1/4"
L	8'-0"	L	20'-10 1/4"
M	8'-0"	M	17'-6 1/4"
N	12'-2"	N	9'-10 1/2"
P	12'-5 3/4"	P	7'-1 3/4"
Q	12'-4 1/2"	Q	5'-10"
R	15'-1 1/4"	R	1'-10 3/4"
S	20'-7 1/2"	S	4'-4 1/4"
T	21'-11 3/4"	T	6'-4 3/4"
U	21'-6"	U	7'-6 3/4"
SL	14'-3"	SL	2'-10"
SR	12'-8 3/4"	SR	9'-5 1/2"
DL	8'-11"	DL	10'-10"
DR	4'-5 3/4"	DR	12'-9 1/4"

NOTICE

SWIMMING POOLS AND ACCESSORIES (INCLUDING DIVING BOARDS) ARE DANGEROUS WHEN IMPROPERLY USED OR INSTALLED. IT IS THE RESPONSIBILITY OF MUNICIPAL OFFICIALS, BUILDERS AND POOL OWNERS TO ADHERE TO ALL SAFETY RECOMMENDATIONS AND STANDARDS ISSUED BY THE POOL & HOT TUB COUNCIL, LOCAL AUTHORITIES AND EQUIPMENT MANUFACTURERS. PLEASE REFER TO DIVING BOARD MANUFACTURERS FOR CORRECT POSITIONING AND INSTALLATION OF DIVING EQUIPMENT.



*ALL DIMENSIONS ARE FINISHED



HIGHBURY POOLS LTD

WASAGA - LEFT 14 x 14 x 28

DRAWING REFERENCE #
94-14-28-1

DRAWN BY: JP
REV. 31 JUL 14
SHEET 1 OF 2

